



[Go to Product page](#)

Datasheet for ABIN3181619

## anti-CABP2 antibody

### 2 Images

#### Overview

Quantity:	100 µL
Target:	CABP2
Reactivity:	Human, Mouse, Rat
Host:	Rabbit
Clonality:	Polyclonal
Conjugate:	This CABP2 antibody is un-conjugated
Application:	Western Blotting (WB)

#### Product Details

Immunogen:	Synthetic Peptide
Isotype:	IgG
Specificity:	The antibody detects CABP2
Characteristics:	Rabbit Polyclonal to CABP2.
Purification:	The antibody was affinity-purified from rabbit antiserum by affinity-chromatography using epitope-specific immunogen.

#### Target Details

Target:	CABP2
Alternative Name:	CABP2 ( <a href="#">CABP2 Products</a> )
Gene ID:	51475

## Target Details

UniProt: [Q9NPB3](#)

## Application Details

Application Notes: WB 1:500-1:2000

Restrictions: For Research Use only

## Handling

Format: Liquid

Concentration: 1 mg/mL

Buffer: Liquid in PBS containing 50 % glycerol, 0.5 % BSA and 0.02 % sodium azide.

Preservative: Sodium azide

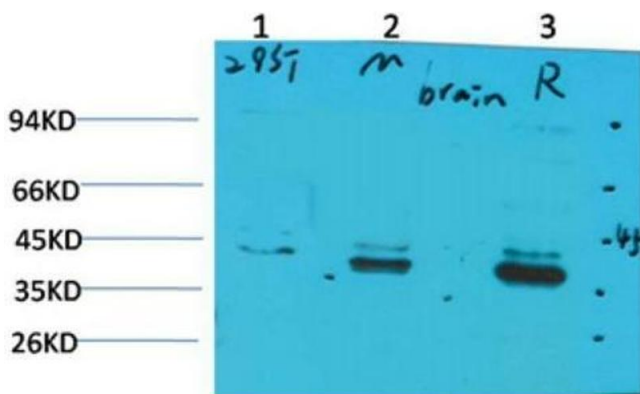
Precaution of Use: This product contains Sodium azide: a POISONOUS AND HAZARDOUS SUBSTANCE which should be handled by trained staff only.

Handling Advice: Avoid repeated freeze/thaw cycles.

Storage: -20 °C

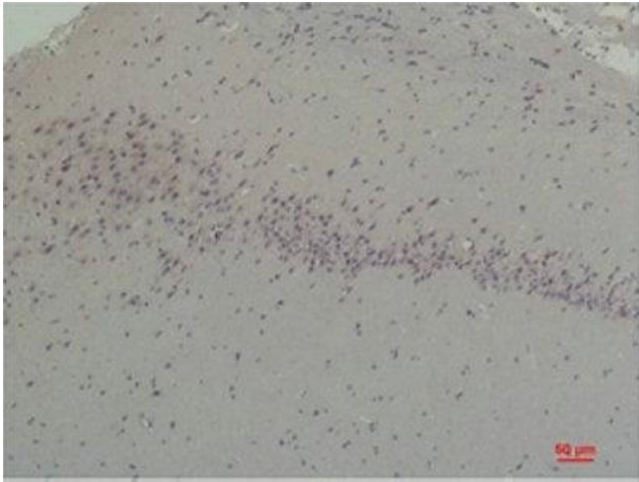
Storage Comment: Store at -20°C.

## Images



### Western Blotting

**Image 1.** Western Blot (WB) analysis of 1)293T, 2)Mouse Brain Tissue, 3) Rat Brain Tissue with CABP2 Rabbit Polyclonal Antibody diluted at 1:2000.



### Immunohistochemistry

**Image 2.** Immunohistochemistry (IHC) analysis of paraffin-embedded Rat Brain Tissue using CABP2 Rabbit Polyclonal Antibody diluted at 1:200.