

Datasheet for ABIN3181637
anti-PPIB antibody



[Go to Product page](#)

1 Image

Overview

Quantity:	100 µL
Target:	PPIB
Reactivity:	Human, Mouse, Rat
Host:	Mouse
Clonality:	Monoclonal
Conjugate:	This PPIB antibody is un-conjugated
Application:	Western Blotting (WB)

Product Details

Clone:	2B10
Isotype:	IgG1
Specificity:	Cyclophilin B Mouse Monoclonal Antibody (2B10) detects endogenous levels of Cyclophilin B
Characteristics:	Mouse Monoclonal to Cyclophilin B (2B10).
Purification:	The antibody was affinity-purified from mouse ascites by affinity-chromatography using specific immunogen.

Target Details

Target:	PPIB
Alternative Name:	Cyclophilin B (PPIB Products)
Gene ID:	5479

Target Details

UniProt: [P23284](#)

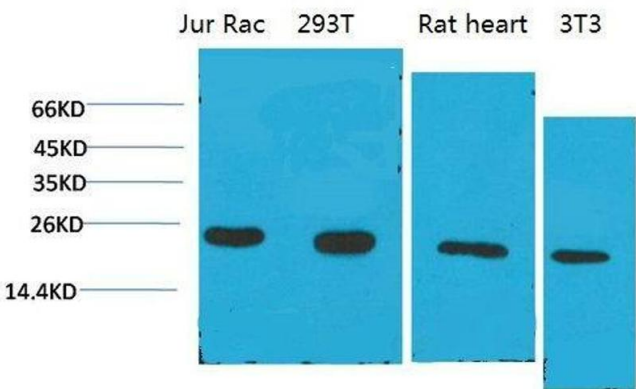
Application Details

Application Notes:	WB 1:1000-2000
Restrictions:	For Research Use only

Handling

Format:	Liquid
Concentration:	1 mg/mL
Buffer:	Liquid in PBS containing 50 % glycerol, 0.5 % BSA and 0.02 % sodium azide.
Preservative:	Sodium azide
Precaution of Use:	This product contains Sodium azide: a POISONOUS AND HAZARDOUS SUBSTANCE which should be handled by trained staff only.
Handling Advice:	Avoid repeated freeze/thaw cycles.
Storage:	-20 °C
Storage Comment:	Store at -20°C.

Images



Western Blotting

Image 1. Western Blot (WB) analysis of 1) Jurkat, 2)293T, 3)Rat Liver Tissue, 4)3T3 with Cyclophilin B Mouse Monoclonal Antibody diluted at 1:2000.