

Datasheet for ABIN3181646
anti-NFKB1B antibody



[Go to Product page](#)

2 Images

Overview

Quantity:	100 µL
Target:	NFKB1B
Reactivity:	Human, Mouse, Rat
Host:	Mouse
Clonality:	Monoclonal
Conjugate:	This NFKB1B antibody is un-conjugated
Application:	Immunohistochemistry (IHC)

Product Details

Clone:	1F3
Isotype:	IgG1
Specificity:	IκB β Mouse Monoclonal Antibody (1F3) detects endogenous levels of IκB β
Characteristics:	Mouse Monoclonal to IκB β (1F3).
Purification:	The antibody was affinity-purified from mouse ascites by affinity-chromatography using specific immunogen.

Target Details

Target:	NFKB1B
Alternative Name:	IκappaB beta (NFKB1B Products)
Gene ID:	4793

Target Details

UniProt:	Q15653
Pathways:	NF-kappaB Signaling , Activation of Innate immune Response , Maintenance of Protein Location , Toll-Like Receptors Cascades

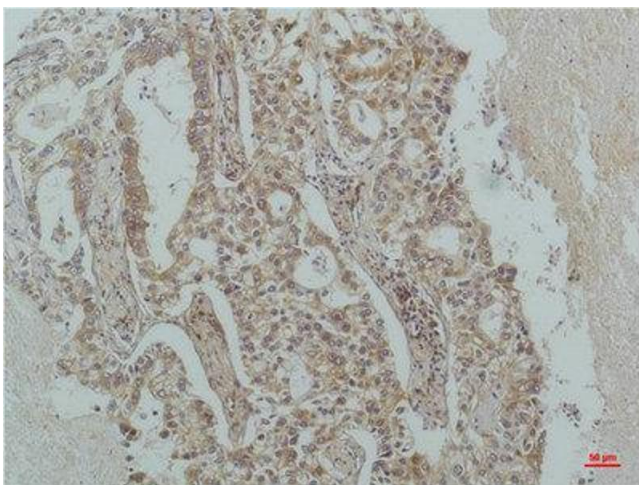
Application Details

Application Notes:	IHC 1:100-200
Restrictions:	For Research Use only

Handling

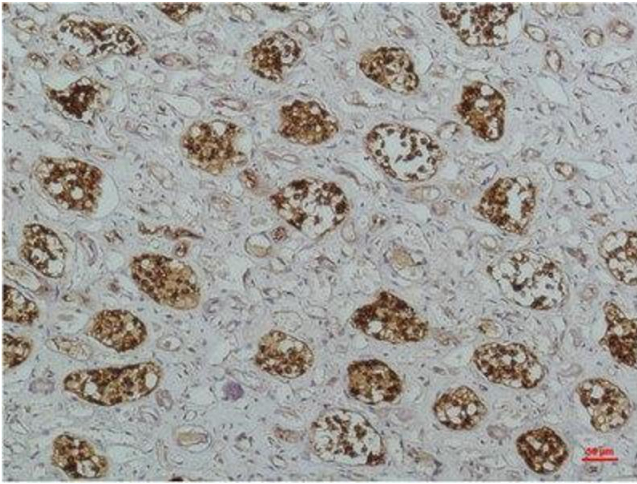
Format:	Liquid
Concentration:	1 mg/mL
Buffer:	Liquid in PBS containing 50 % glycerol, 0.5 % BSA and 0.02 % sodium azide.
Preservative:	Sodium azide
Precaution of Use:	This product contains Sodium azide: a POISONOUS AND HAZARDOUS SUBSTANCE which should be handled by trained staff only.
Handling Advice:	Avoid repeated freeze/thaw cycles.
Storage:	-20 °C
Storage Comment:	Store at -20°C.

Images



Immunohistochemistry

Image 1. Immunohistochemistry (IHC) analysis of paraffin-embedded Human Lung Carcinoma using IkappaB beta (Monoclonal Antibody diluted at 1:200).



Immunohistochemistry

Image 2. Immunohistochemistry (IHC) analysis of paraffin-embedded Human Kidney Tissue using IkappaB beta Mouse Monoclonal Antibody diluted at 1:200.