



[Go to Product page](#)

Datasheet for ABIN3181670

anti-EDNRB antibody

2 Images

Overview

Quantity:	100 µL
Target:	EDNRB
Reactivity:	Human, Mouse, Rat
Host:	Rabbit
Clonality:	Polyclonal
Conjugate:	This EDNRB antibody is un-conjugated
Application:	Immunohistochemistry (IHC)

Product Details

Isotype:	IgG
Specificity:	Endothelin B Receptor Rabbit Polyclonal Antibody (A221) detects endogenous levels of Endothelin B Receptor
Characteristics:	Rabbit Polyclonal to Endothelin B Receptor (A221).
Purification:	The antibody was affinity-purified from rabbit antiserum by affinity-chromatography using specific immunogen.

Target Details

Target:	EDNRB
Alternative Name:	Endothelin B Receptor (EDNRB Products)
Gene ID:	1910

Target Details

UniProt: [P24530](#)

Pathways: [Cellular Response to Molecule of Bacterial Origin, cAMP Metabolic Process](#)

Application Details

Application Notes: IHC 1:100-200

Restrictions: For Research Use only

Handling

Format: Liquid

Concentration: 1 mg/mL

Buffer: Liquid in PBS containing 50 % glycerol, 0.5 % BSA and 0.02 % sodium azide.

Preservative: Sodium azide

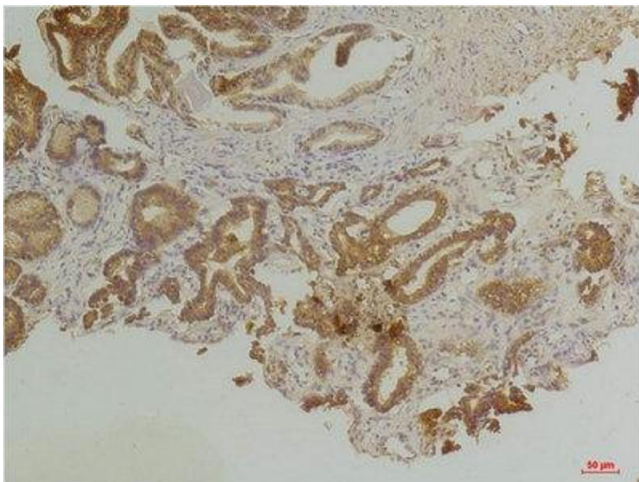
Precaution of Use: This product contains Sodium azide: a POISONOUS AND HAZARDOUS SUBSTANCE which should be handled by trained staff only.

Handling Advice: Avoid repeated freeze/thaw cycles.

Storage: -20 °C

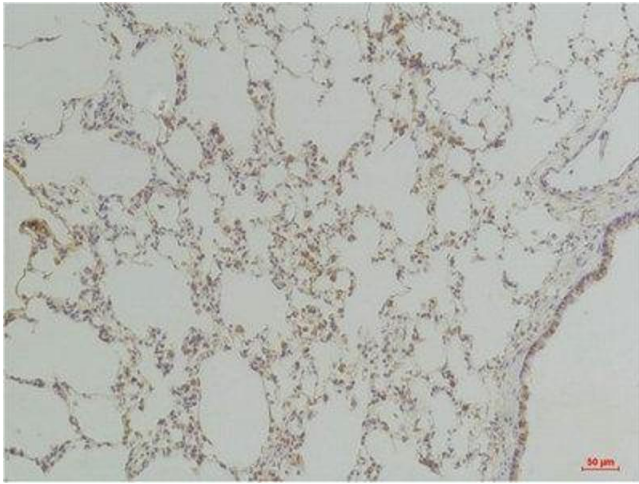
Storage Comment: Store at -20°C.

Images



Immunohistochemistry

Image 1. Immunohistochemistry (IHC) analysis of paraffin-embedded Human Prostate Tissue using Endothelin B Receptor Rabbit Polyclonal Antibody diluted at 1:200.



Immunohistochemistry

Image 2. Immunohistochemistry (IHC) analysis of paraffin-embedded Rat Lung Tissue using Endothelin B Receptor Rabbit Polyclonal Antibody diluted at 1:200.