



[Go to Product page](#)

Datasheet for ABIN3181685

anti-Kv1.1 Potassium Channel antibody

3 Images

Overview

Quantity:	100 µL
Target:	Kv1.1 Potassium Channel
Reactivity:	Rat, Human, Mouse
Host:	Rabbit
Clonality:	Polyclonal
Conjugate:	This Kv1.1 Potassium Channel antibody is un-conjugated
Application:	Western Blotting (WB), Immunohistochemistry (IHC)

Product Details

Isotype:	IgG
Specificity:	Kv1.1 potassium channel Rabbit Polyclonal Antibody (A243) detects endogenous levels of Kv1.1 potassium channel
Characteristics:	Rabbit Polyclonal to Kv1.1 potassium channel (A243).
Purification:	The antibody was affinity-purified from rabbit antiserum by affinity-chromatography using specific immunogen.

Target Details

Target:	Kv1.1 Potassium Channel
Abstract:	Kv1.1 Potassium Channel Products
Gene ID:	3736

Target Details

UniProt: [Q09470](#)

Application Details

Application Notes: WB 1:1000-2000, IHC 1:100-200

Restrictions: For Research Use only

Handling

Format: Liquid

Concentration: 1 mg/mL

Buffer: Liquid in PBS containing 50 % glycerol, 0.5 % BSA and 0.02 % sodium azide.

Preservative: Sodium azide

Precaution of Use: This product contains Sodium azide: a POISONOUS AND HAZARDOUS SUBSTANCE which should be handled by trained staff only.

Handling Advice: Avoid repeated freeze/thaw cycles.

Storage: -20 °C

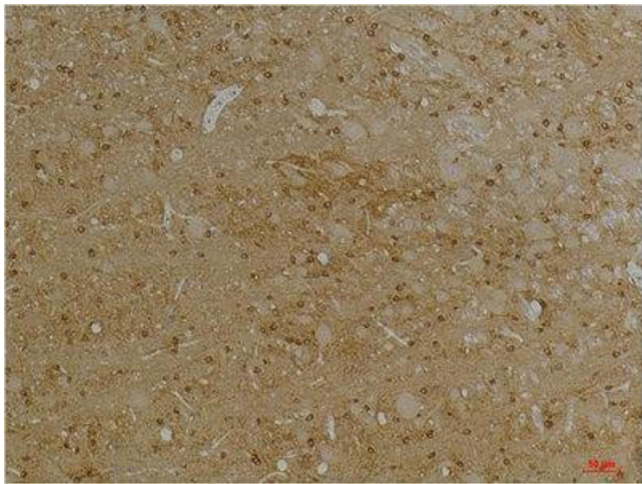
Storage Comment: Store at -20°C.

Images



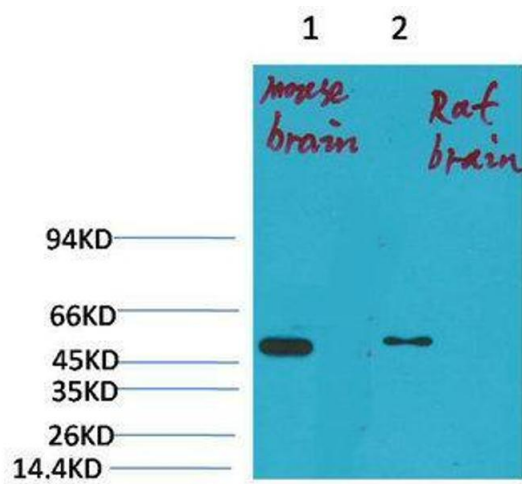
Immunohistochemistry

Image 1. Immunohistochemistry (IHC) analysis of paraffin-embedded Mouse Brain Tissue using KV1.1 Potassium Channel Rabbit Polyclonal Antibody diluted at 1:200.



Immunohistochemistry

Image 2. Immunohistochemistry (IHC) analysis of paraffin-embedded Rat Brain Tissue using KV1.1 Potassium Channel Rabbit Polyclonal Antibody diluted at 1:200.



Western Blotting

Image 3. Western Blot (WB) analysis of 1) Mouse Brain Tissue, 2) Rat Brain Tissue with KV1.1 potassium channel Rabbit Polyclonal Antibody diluted at 1:2000.