

Datasheet for ABIN3181713

anti-5HT1D antibody[Go to Product page](#)**3** Images**2** Publications

Overview

Quantity:	100 µL
Target:	5HT1D (HTR1D)
Reactivity:	Mouse, Human, Rat
Host:	Rabbit
Clonality:	Polyclonal
Conjugate:	This 5HT1D antibody is un-conjugated
Application:	Western Blotting (WB), ELISA, Immunohistochemistry (Paraffin-embedded Sections) (IHC (p))

Product Details

Isotype:	IgG
Specificity:	SR-1D Polyclonal Antibody detects endogenous levels of SR-1D protein.
Characteristics:	Rabbit Polyclonal to SR-1D.
Purification:	The antibody was affinity-purified from rabbit antiserum by affinity-chromatography using epitope-specific immunogen.

Target Details

Target:	5HT1D (HTR1D)
Alternative Name:	SR-1D (HTR1D Products)
Gene ID:	3352
UniProt:	P28221

Target Details

Pathways: [JAK-STAT Signaling](#)

Application Details

Application Notes: WB 1:500-1:2000, IHC-P 1:100-1:300, ELISA 1:10000,

Restrictions: For Research Use only

Handling

Format: Liquid

Concentration: 1 mg/mL

Buffer: Liquid in PBS containing 50 % glycerol, 0.5 % BSA and 0.02 % sodium azide.

Preservative: Sodium azide

Precaution of Use: This product contains Sodium azide: a POISONOUS AND HAZARDOUS SUBSTANCE which should be handled by trained staff only.

Handling Advice: Avoid repeated freeze/thaw cycles.

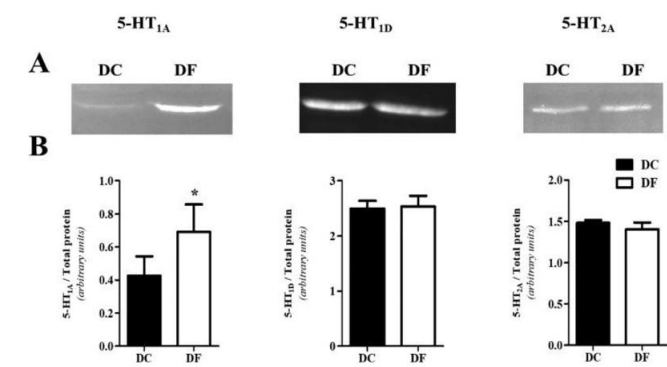
Storage: -20 °C

Storage Comment: Store at -20°C.

Publications

Product cited in: García-Pedraza, Fernández-González, López, Martín, Alarcón-Torrecillas, Rodríguez-Barbero, Morán, García-Domingo: "Oral fluoxetine treatment changes serotonergic sympatho-regulation in experimental type 1 diabetes." in: **Life sciences**, Vol. 293, pp. 120335, (2022) ([PubMed](#)).

García-Pedraza, Hernández-Abreu, Morán, Carretero, García-Domingo, Villalón: "Role of peripheral 5-HT_{5A} receptors in 5-HT-induced cardiac sympatho-inhibition in type 1 diabetic rats." in: **Scientific reports**, Vol. 10, Issue 1, pp. 19358, (2021) ([PubMed](#)).

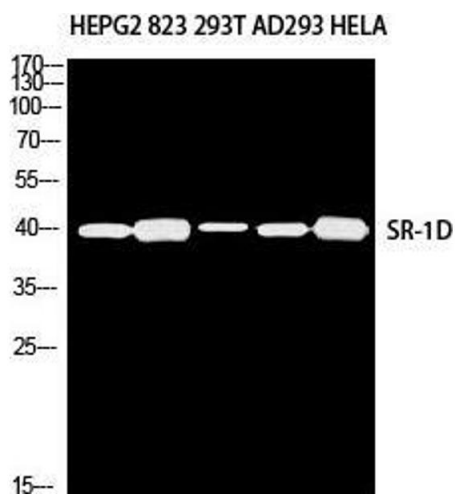


Western Blotting

Image 1. 5-HT_{1A}/1D/2A receptor expression in thoracic aortas from control (DC) and fluoxetine-treated (DF) diabetic rats by Western blot. A representative blot of total protein extracts from four independent experiments is shown, using total amount of protein as a loading control (A). Blots were assessed by densitometric analysis. The ratio of 5-HT receptors expression vs total protein is outlined in the graph (B). All values are represented as mean ± SEM. *p < 0.05 vs DC values. Source: PMID35051421

Western Blotting

Image 2. Western Blot (WB) analysis of HepG2 823 293T AD293 HeLa using SR-1D antibody.



Immunohistochemistry

Image 3. Immunohistochemistry (IHC) analysis of paraffin-embedded Human Brain, antibody was diluted at 1:100.

