



Datasheet for ABIN3181716  
**anti-ACER2 antibody**



[Go to Product page](#)

4 Images

Overview

Quantity:	100 µL
Target:	ACER2
Reactivity:	Human, Mouse
Host:	Rabbit
Clonality:	Polyclonal
Conjugate:	This ACER2 antibody is un-conjugated
Application:	Western Blotting (WB), ELISA, Immunohistochemistry (Paraffin-embedded Sections) (IHC (p))

Product Details

Isotype:	IgG
Specificity:	ASAH3L Polyclonal Antibody detects endogenous levels of ASAH3L protein.
Characteristics:	Rabbit Polyclonal to ASAH3L.
Purification:	The antibody was affinity-purified from rabbit antiserum by affinity-chromatography using epitope-specific immunogen.

Target Details

Target:	ACER2
Alternative Name:	ASAH3L ( <a href="#">ACER2 Products</a> )
Gene ID:	340485
UniProt:	<a href="#">Q5QJU3</a>

## Target Details

Pathways: [Positive Regulation of Endopeptidase Activity](#), [Regulation of Carbohydrate Metabolic Process](#)

## Application Details

Application Notes: WB 1:500-1:2000, IHC-P 1:100-1:300, ELISA 1:10000,

Restrictions: For Research Use only

## Handling

Format: Liquid

Concentration: 1 mg/mL

Buffer: Liquid in PBS containing 50 % glycerol, 0.5 % BSA and 0.02 % sodium azide.

Preservative: Sodium azide

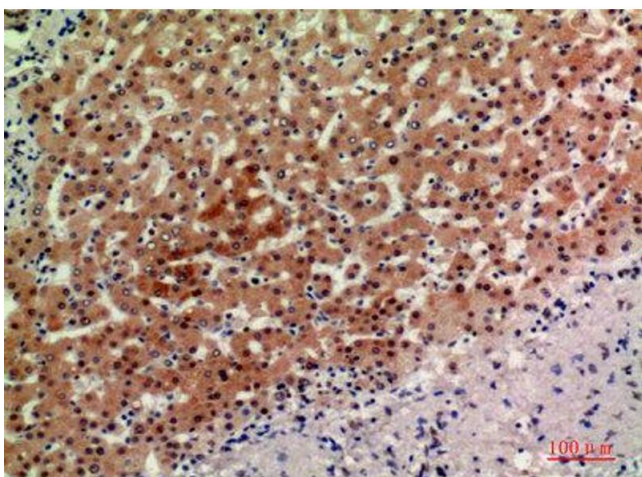
Precaution of Use: This product contains Sodium azide: a POISONOUS AND HAZARDOUS SUBSTANCE which should be handled by trained staff only.

Handling Advice: Avoid repeated freeze/thaw cycles.

Storage: -20 °C

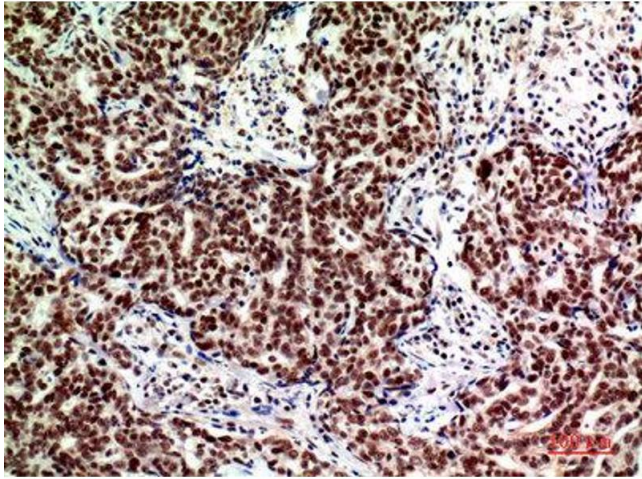
Storage Comment: Store at -20°C.

## Images



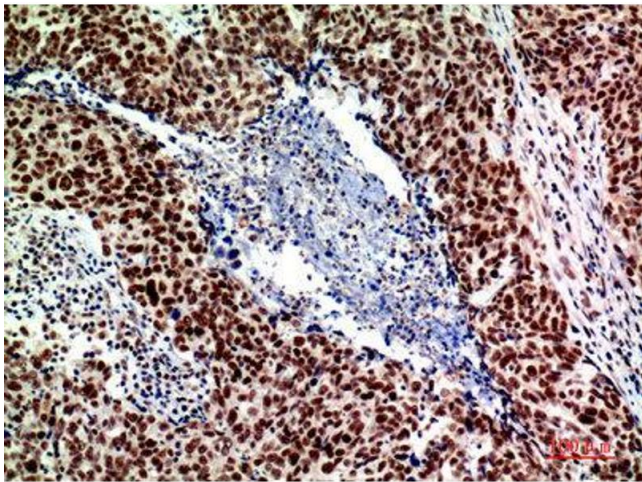
### Immunohistochemistry

**Image 1.** Immunohistochemistry (IHC) analysis of paraffin-embedded Human Liver, antibody was diluted at 1:200.



#### Immunohistochemistry

**Image 2.** Immunohistochemistry (IHC) analysis of paraffin-embedded Human Breast Cancer, antibody was diluted at 1:200.



#### Immunohistochemistry

**Image 3.** Immunohistochemistry (IHC) analysis of paraffin-embedded Human Breast Cancer, antibody was diluted at 1:200.

Please check the [product details page](#) for more images. Overall 4 images are available for ABIN3181716.