

Datasheet for ABIN3181728

anti-C7 antibody

3 Images

[Go to Product page](#)

Overview

Quantity:	100 µL
Target:	C7
Reactivity:	Human
Host:	Rabbit
Clonality:	Polyclonal
Conjugate:	This C7 antibody is un-conjugated
Application:	Western Blotting (WB), ELISA, Immunohistochemistry (Paraffin-embedded Sections) (IHC (p))

Product Details

Isotype:	IgG
Specificity:	C7 Polyclonal Antibody detects endogenous levels of C7 protein.
Characteristics:	Rabbit Polyclonal to C7.
Purification:	The antibody was affinity-purified from rabbit antiserum by affinity-chromatography using epitope-specific immunogen.

Target Details

Target:	C7
Alternative Name:	C7 (C7 Products)
Gene ID:	730
UniProt:	P10643

Target Details

Pathways: [Complement System](#)

Application Details

Application Notes: WB 1:500-1:2000, IHC-P 1:100-1:300, ELISA 1:10000,

Restrictions: For Research Use only

Handling

Format: Liquid

Concentration: 1 mg/mL

Buffer: Liquid in PBS containing 50 % glycerol, 0.5 % BSA and 0.02 % sodium azide.

Preservative: Sodium azide

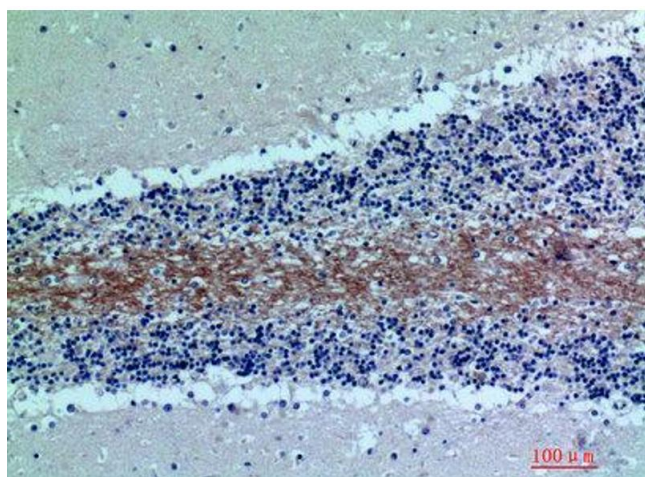
Precaution of Use: This product contains Sodium azide: a POISONOUS AND HAZARDOUS SUBSTANCE which should be handled by trained staff only.

Handling Advice: Avoid repeated freeze/thaw cycles.

Storage: -20 °C

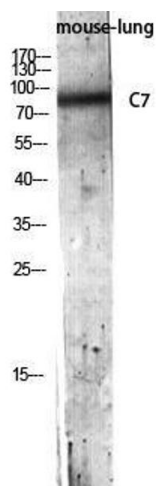
Storage Comment: Store at -20°C.

Images



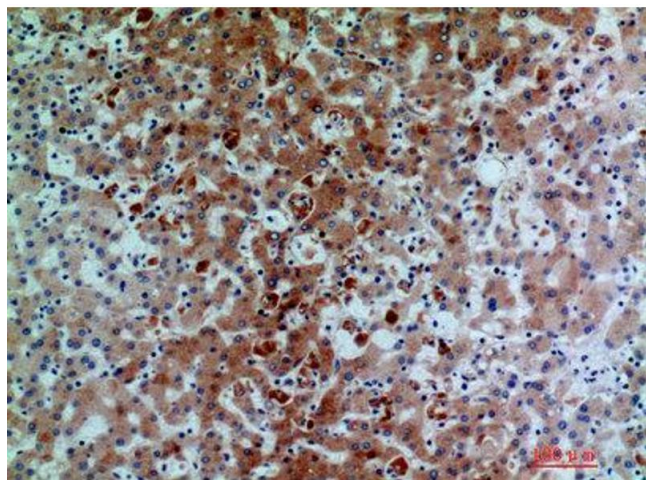
Immunohistochemistry

Image 1. Immunohistochemistry (IHC) analysis of paraffin-embedded Human Brain, antibody was diluted at 1:200.



Western Blotting

Image 2. Western Blot (WB) analysis of Mouse Lung lysis using C7 antibody.



Immunohistochemistry

Image 3. Immunohistochemistry (IHC) analysis of paraffin-embedded Human Liver, antibody was diluted at 1:200.