

Datasheet for ABIN3181754
anti-TP53INP2 antibody



[Go to Product page](#)

3 Images

Overview

Quantity:	100 µL
Target:	TP53INP2
Reactivity:	Human
Host:	Rabbit
Clonality:	Polyclonal
Conjugate:	This TP53INP2 antibody is un-conjugated
Application:	ELISA, Western Blotting (WB), Immunohistochemistry (Paraffin-embedded Sections) (IHC (p))

Product Details

Isotype:	IgG
Specificity:	TP53INP2 Polyclonal Antibody detects endogenous levels of TP53INP2 protein.
Characteristics:	Rabbit Polyclonal to TP53INP2.
Purification:	The antibody was affinity-purified from rabbit antiserum by affinity-chromatography using epitope-specific immunogen.

Target Details

Target:	TP53INP2
Alternative Name:	TP53INP2 (TP53INP2 Products)
Gene ID:	58476
UniProt:	Q8IXH6

Application Details

Application Notes: WB 1:500-1:2000, IHC-P 1:100-1:300, ELISA 1:10000,

Restrictions: For Research Use only

Handling

Format: Liquid

Concentration: 1 mg/mL

Buffer: Liquid in PBS containing 50 % glycerol, 0.5 % BSA and 0.02 % sodium azide.

Preservative: Sodium azide

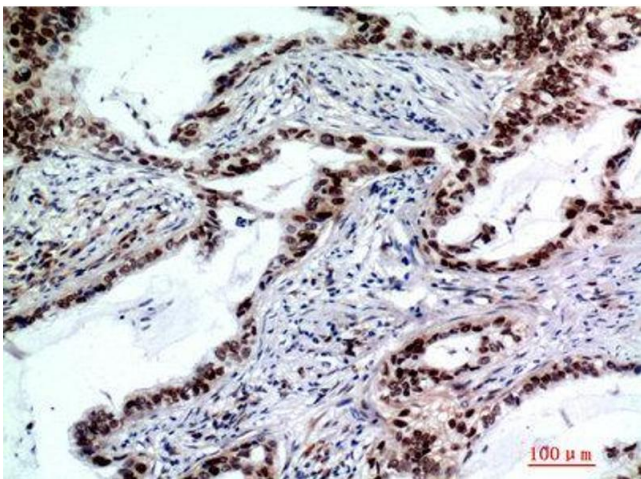
Precaution of Use: This product contains Sodium azide: a POISONOUS AND HAZARDOUS SUBSTANCE which should be handled by trained staff only.

Handling Advice: Avoid repeated freeze/thaw cycles.

Storage: -20 °C

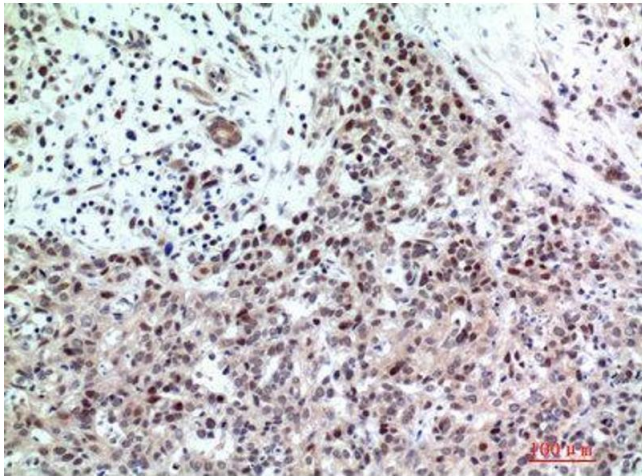
Storage Comment: Store at -20°C.

Images



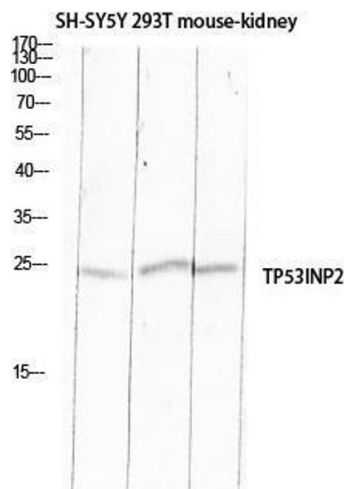
Immunohistochemistry

Image 1. Immunohistochemistry (IHC) analysis of paraffin-embedded Human Lungcancer, antibody was diluted at 1:200.



Immunohistochemistry

Image 2. Immunohistochemistry (IHC) analysis of paraffin-embedded Human Breast Cancer, antibody was diluted at 1:200.



Western Blotting

Image 3. Western Blot (WB) analysis of SH-SY5Y 293T Mouse Kidney lysis using TP53INP2 antibody.