

Datasheet for ABIN3181794

anti-Cathepsin L antibody (Cleaved-Thr288, Heavy Chain)[Go to Product page](#)**1** Image

Overview

Quantity:	100 µL
Target:	Cathepsin L (CTSL1)
Binding Specificity:	Cleaved-Thr288, Heavy Chain
Reactivity:	Human
Host:	Rabbit
Clonality:	Polyclonal
Conjugate:	This Cathepsin L antibody is un-conjugated
Application:	Western Blotting (WB), ELISA

Product Details

Immunogen:	Synthesized peptide derived from the C-terminal region of human Cathepsin L1 HC.
Isotype:	IgG
Specificity:	Cleaved-Cathepsin L1 HC (T288) Polyclonal Antibody detects endogenous levels of fragment of activated Cathepsin L1 HC protein resulting from cleavage adjacent to T288.
Characteristics:	Rabbit Polyclonal to Cleaved-Cathepsin L1 HC (T288).
Purification:	The antibody was affinity-purified from rabbit antiserum by affinity-chromatography using epitope-specific immunogen.

Target Details

Target:	Cathepsin L (CTSL1)
---------	---------------------

Target Details

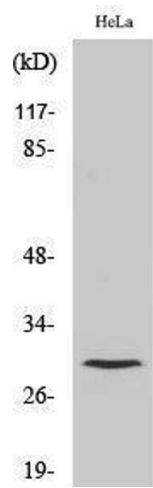
Alternative Name:	Cathepsin L1 HC (CTSL1 Products)
Molecular Weight:	30 kDa
Gene ID:	1514
UniProt:	P07711
Pathways:	Activation of Innate immune Response , Toll-Like Receptors Cascades

Application Details

Application Notes:	WB 1:500-1:2000, ELISA 1:10000,
Restrictions:	For Research Use only

Handling

Format:	Liquid
Concentration:	1 mg/mL
Buffer:	Liquid in PBS containing 50 % glycerol, 0.5 % BSA and 0.02 % sodium azide.
Preservative:	Sodium azide
Precaution of Use:	This product contains Sodium azide: a POISONOUS AND HAZARDOUS SUBSTANCE which should be handled by trained staff only.
Handling Advice:	Avoid repeated freeze/thaw cycles.
Storage:	-20 °C
Storage Comment:	Store at -20°C.



Western Blotting

Image 1.