



[Go to Product page](#)

Datasheet for ABIN3181802

## anti-COL3A1 antibody (cleaved, Gly1221)

### 1 Image

#### Overview

|                      |                                       |
|----------------------|---------------------------------------|
| Quantity:            | 100 µL                                |
| Target:              | COL3A1                                |
| Binding Specificity: | cleaved, Gly1221                      |
| Reactivity:          | Human                                 |
| Host:                | Rabbit                                |
| Clonality:           | Polyclonal                            |
| Conjugate:           | This COL3A1 antibody is un-conjugated |
| Application:         | Western Blotting (WB), ELISA          |

#### Product Details

|                  |   |
|------------------|---|
| Immunogen:       | Synthesized peptide derived from the C-terminal region of human COL3A1.   |
| Isotype:         | IgG   |
| Specificity:     | Cleaved-COL3A1 (G1221) Polyclonal Antibody detects endogenous levels of fragment of activated COL3A1 protein resulting from cleavage adjacent to G1221. |
| Characteristics: | Rabbit Polyclonal to Cleaved-COL3A1 (G1221).  |
| Purification:    | The antibody was affinity-purified from rabbit antiserum by affinity-chromatography using epitope-specific immunogen.                                   |

#### Target Details

|         |        |
|---------|--------|
| Target: | COL3A1 |
|---------|--------|

## Target Details

---

|                   |   |
|-------------------|---|
| Alternative Name: | COL3A1 ( <a href="#">COL3A1 Products</a> )                        |
| Molecular Weight: | 95 kDa  |
| Gene ID:          | 1281  |
| UniProt:          | <a href="#">P02461</a>  |
| Pathways:         | <a href="#">Autophagy</a> , <a href="#">Growth Factor Binding</a> |

## Application Details

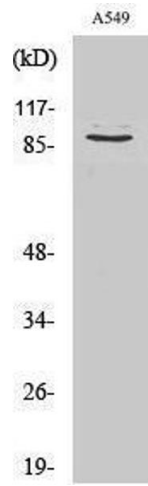
---

|                    |                                 |
|--------------------|---------------------------------|
| Application Notes: | WB 1:500-1:2000, ELISA 1:10000, |
| Restrictions:      | For Research Use only           |

## Handling

---

|                    |  |
|--------------------|--|
| Format:            | Liquid   |
| Concentration:     | 1 mg/mL  |
| Buffer:            | Liquid in PBS containing 50 % glycerol, 0.5 % BSA and 0.02 % sodium azide.   |
| Preservative:      | Sodium azide   |
| Precaution of Use: | This product contains Sodium azide: a POISONOUS AND HAZARDOUS SUBSTANCE which should be handled by trained staff only. |
| Handling Advice:   | Avoid repeated freeze/thaw cycles.   |
| Storage:           | -20 °C   |
| Storage Comment:   | Store at -20°C.  |



### Western Blotting

Image 1.