



[Go to Product page](#)

Datasheet for ABIN3181811

anti-MMP10 antibody (cleaved, Phe99)

2 Images

Overview

Quantity:	100 µL
Target:	MMP10
Binding Specificity:	cleaved, Phe99
Reactivity:	Human
Host:	Rabbit
Clonality:	Polyclonal
Conjugate:	This MMP10 antibody is un-conjugated
Application:	Western Blotting (WB), ELISA

Product Details

Immunogen:	Synthesized peptide derived from the Internal region of human MMP-10.
Isotype:	IgG
Specificity:	Cleaved-MMP-10 (F99) Polyclonal Antibody detects endogenous levels of fragment of activated MMP-10 protein resulting from cleavage adjacent to F99.
Characteristics:	Rabbit Polyclonal to Cleaved-MMP-10 (F99).
Purification:	The antibody was affinity-purified from rabbit antiserum by affinity-chromatography using epitope-specific immunogen.

Target Details

Target:	MMP10
---------	-------

Target Details

Alternative Name:	MMP-10 (MMP10 Products)
Molecular Weight:	43 kDa
Gene ID:	4319
UniProt:	P09238

Application Details

Application Notes:	WB 1:500-1:2000, ELISA 1:40000,
Restrictions:	For Research Use only

Handling

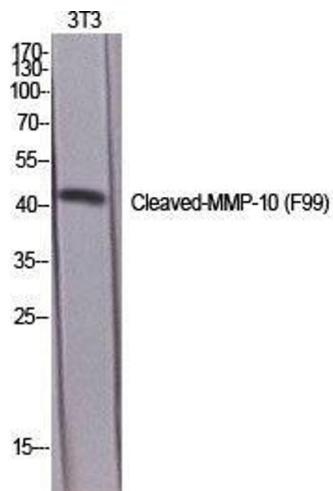
Format:	Liquid
Concentration:	1 mg/mL
Buffer:	Liquid in PBS containing 50 % glycerol, 0.5 % BSA and 0.02 % sodium azide.
Preservative:	Sodium azide
Precaution of Use:	This product contains Sodium azide: a POISONOUS AND HAZARDOUS SUBSTANCE which should be handled by trained staff only.
Handling Advice:	Avoid repeated freeze/thaw cycles.
Storage:	-20 °C
Storage Comment:	Store at -20°C.

Images



Western Blotting

Image 1.



Western Blotting

Image 2. Western Blot (WB) analysis of specific cells using Cleaved-MMP-10 (F99) Polyclonal Antibody.