



Datasheet for ABIN3181816

anti-Matrix Metalloproteinase 23 (MMP23) (cleaved), (Tyr79) antibody



[Go to Product page](#)

1 Image

Overview

Quantity:	100 µL
Target:	Matrix Metalloproteinase 23 (MMP23)
Binding Specificity:	cleaved, Tyr79
Reactivity:	Human, Mouse, Rat
Host:	Rabbit
Clonality:	Polyclonal
Conjugate:	Un-conjugated
Application:	Western Blotting (WB), ELISA

Product Details

Immunogen:	Synthesized peptide derived from the Internal region of human MMP-23.
Isotype:	IgG
Specificity:	Cleaved-MMP-23 (Y79) Polyclonal Antibody detects endogenous levels of fragment of activated MMP-23 protein resulting from cleavage adjacent to Y79.
Characteristics:	Rabbit Polyclonal to Cleaved-MMP-23 (Y79).
Purification:	The antibody was affinity-purified from rabbit antiserum by affinity-chromatography using epitope-specific immunogen.

Target Details

Target:	Matrix Metalloproteinase 23 (MMP23)
---------	-------------------------------------

Target Details

Alternative Name: MMP-23 ([MMP23 Products](#))

Molecular Weight: 36 kDa

Gene ID: 8510

UniProt: [O75900](#)

Application Details

Application Notes: WB 1:500-1:2000, ELISA 1:20000,

Restrictions: For Research Use only

Handling

Format: Liquid

Concentration: 1 mg/mL

Buffer: Liquid in PBS containing 50 % glycerol, 0.5 % BSA and 0.02 % sodium azide.

Preservative: Sodium azide

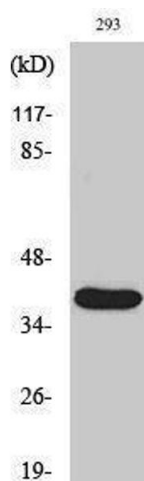
Precaution of Use: This product contains Sodium azide: a POISONOUS AND HAZARDOUS SUBSTANCE which should be handled by trained staff only.

Handling Advice: Avoid repeated freeze/thaw cycles.

Storage: -20 °C

Storage Comment: Store at -20°C.

Images



Western Blotting

Image 1.