



[Go to Product page](#)

Datasheet for ABIN3181830

anti-COL4a3 antibody (cleaved, Pro1426)

1 Image

Overview

Quantity:	100 µL
Target:	COL4a3 (COL4A3)
Binding Specificity:	cleaved, Pro1426
Reactivity:	Human, Monkey
Host:	Rabbit
Clonality:	Polyclonal
Conjugate:	This COL4a3 antibody is un-conjugated
Application:	ELISA, Western Blotting (WB)

Product Details

Immunogen:	Synthesized peptide derived from the C-terminal region of human Tumstatin.
Isotype:	IgG
Specificity:	Cleaved-Tumstatin (P1426) Polyclonal Antibody detects endogenous levels of fragment of activated Tumstatin protein resulting from cleavage adjacent to P1426.
Characteristics:	Rabbit Polyclonal to Cleaved-Tumstatin (P1426).
Purification:	The antibody was affinity-purified from rabbit antiserum by affinity-chromatography using epitope-specific immunogen.

Target Details

Target:	COL4a3 (COL4A3)
---------	-----------------

Target Details

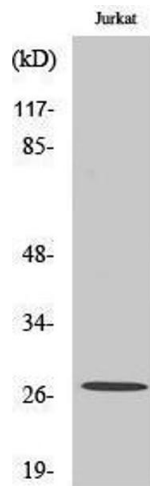
Alternative Name:	Tumstatin (COL4A3 Products)
Molecular Weight:	27 kDa
Gene ID:	1285
UniProt:	Q01955
Pathways:	Sensory Perception of Sound , Positive Regulation of Endopeptidase Activity

Application Details

Application Notes:	WB 1:500-1:2000, ELISA 1:40000,
Restrictions:	For Research Use only

Handling

Format:	Liquid
Concentration:	1 mg/mL
Buffer:	Liquid in PBS containing 50 % glycerol, 0.5 % BSA and 0.02 % sodium azide.
Preservative:	Sodium azide
Precaution of Use:	This product contains Sodium azide: a POISONOUS AND HAZARDOUS SUBSTANCE which should be handled by trained staff only.
Handling Advice:	Avoid repeated freeze/thaw cycles.
Storage:	-20 °C
Storage Comment:	Store at -20°C.



Western Blotting

Image 1.