

Datasheet for ABIN3181849
anti-PARP1 antibody (Asp214, cleaved)



[Go to Product page](#)

3 Images

Overview

Quantity:	100 µL
Target:	PARP1
Binding Specificity:	Asp214, cleaved
Reactivity:	Human, Mouse
Host:	Rabbit
Clonality:	Polyclonal
Conjugate:	This PARP1 antibody is un-conjugated
Application:	Western Blotting (WB), ELISA

Product Details

Immunogen:	Synthesized peptide derived from the Internal region of human PARP-1.
Isotype:	IgG
Specificity:	Cleaved-PARP-1 (D214) Polyclonal Antibody detects endogenous levels of fragment of activated PARP-1 protein resulting from cleavage adjacent to D214.
Characteristics:	Rabbit Polyclonal to Cleaved-PARP-1 (D214).
Purification:	The antibody was affinity-purified from rabbit antiserum by affinity-chromatography using epitope-specific immunogen.

Target Details

Target:	PARP1
---------	-------

Target Details

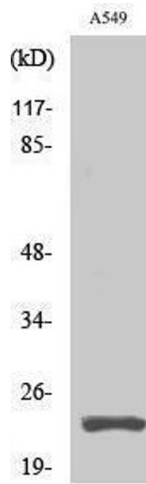
Alternative Name:	PARP-1 (PARP1 Products)
Molecular Weight:	115 kDa
Gene ID:	142
UniProt:	P09874
Pathways:	Apoptosis , Caspase Cascade in Apoptosis , DNA Damage Repair , Production of Molecular Mediator of Immune Response , Maintenance of Protein Location

Application Details

Application Notes:	WB 1:500-1:2000, ELISA 1:20000,
Restrictions:	For Research Use only

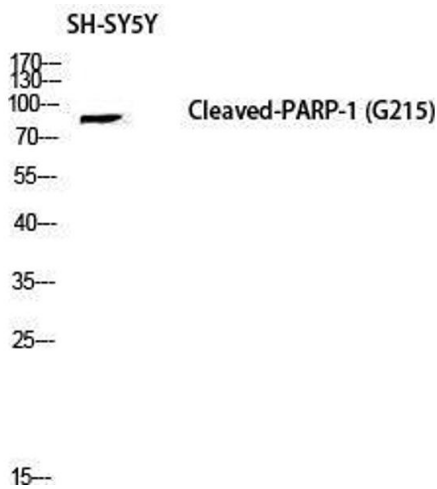
Handling

Format:	Liquid
Concentration:	1 mg/mL
Buffer:	Liquid in PBS containing 50 % glycerol, 0.5 % BSA and 0.02 % sodium azide.
Preservative:	Sodium azide
Precaution of Use:	This product contains Sodium azide: a POISONOUS AND HAZARDOUS SUBSTANCE which should be handled by trained staff only.
Handling Advice:	Avoid repeated freeze/thaw cycles.
Storage:	-20 °C
Storage Comment:	Store at -20°C.



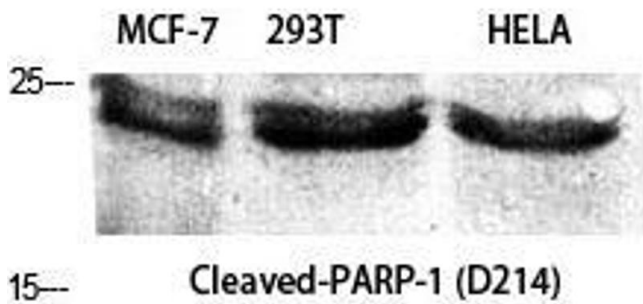
Western Blotting

Image 1.



Western Blotting

Image 2. Western Blot (WB) analysis of SH-SY5Y lysis using Cleaved-PARP-1 (D214) antibody.



Western Blotting

Image 3. Western Blot (WB) analysis of specific cells using Cleaved-PARP-1 (D214) Polyclonal Antibody.