



[Go to Product page](#)

Datasheet for ABIN3181880
anti-APEX1 antibody (acLys6)

4 Images

Overview

Quantity:	100 µL
Target:	APEX1
Binding Specificity:	acLys6
Reactivity:	Human
Host:	Rabbit
Clonality:	Polyclonal
Conjugate:	This APEX1 antibody is un-conjugated
Application:	Western Blotting (WB), ELISA, Immunohistochemistry (Paraffin-embedded Sections) (IHC (p))

Product Details

Immunogen:	Synthesized peptide derived from the human Ref-1 around the acetylation site of K6.
Isotype:	IgG
Specificity:	Acetyl-Ref-1 (K6) Polyclonal Antibody detects endogenous levels of Ref-1 protein only when acetylated at K6.
Characteristics:	Rabbit Polyclonal to Acetyl-Ref-1 (K6).
Purification:	The antibody was affinity-purified from rabbit antiserum by affinity-chromatography using epitope-specific immunogen.

Target Details

Target:	APEX1
---------	-------

Target Details

Alternative Name: [Ref-1 \(APEX1 Products\)](#)

Molecular Weight: 35 kDa

Gene ID: 328

UniProt: [P27695](#)

Pathways: [DNA Damage Repair](#), [Chromatin Binding](#), [Cell RedoxHomeostasis](#), [Smooth Muscle Cell Migration](#), [Positive Regulation of Response to DNA Damage Stimulus](#)

Application Details

Application Notes: WB 1:500-1:2000, IHC-P 1:100-300, ELISA 1:20000,

Restrictions: For Research Use only

Handling

Format: Liquid

Concentration: 1 mg/mL

Buffer: Liquid in PBS containing 50 % glycerol, 0.5 % BSA and 0.02 % sodium azide.

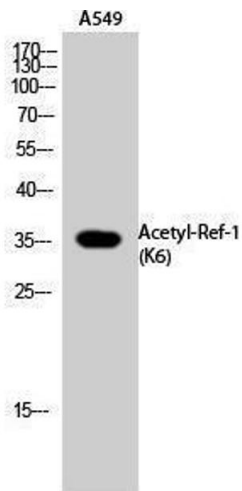
Preservative: Sodium azide

Precaution of Use: This product contains Sodium azide: a POISONOUS AND HAZARDOUS SUBSTANCE which should be handled by trained staff only.

Handling Advice: Avoid repeated freeze/thaw cycles.

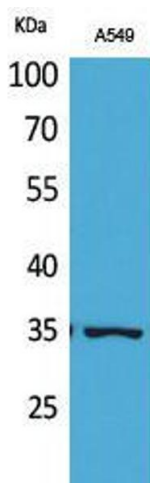
Storage: -20 °C

Storage Comment: Store at -20°C.



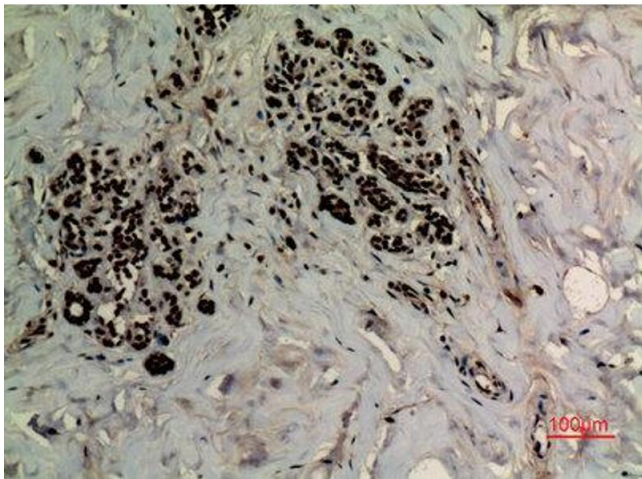
Western Blotting

Image 1.



Western Blotting

Image 2. Western Blot (WB) analysis of A549 cells using Acetyl-Ref-1 (K6) Polyclonal Antibody.



Immunohistochemistry

Image 3. Immunohistochemistry (IHC) analysis of paraffin-embedded Human Breast, antibody was diluted at 1:100.

Please check the [product details page](#) for more images. Overall 4 images are available for ABIN3181880.