



[Go to Product page](#)

Datasheet for ABIN3181882  
**anti-ATF5 antibody (acLys29)**

2 Images

Overview

Quantity:	100 µL
Target:	ATF5
Binding Specificity:	acLys29
Reactivity:	Human, Mouse, Rat
Host:	Rabbit
Clonality:	Polyclonal
Conjugate:	This ATF5 antibody is un-conjugated
Application:	Western Blotting (WB), ELISA

Product Details

Immunogen:	Synthesized peptide derived from the human ATF-5 around the acetylation site of K29.
Isotype:	IgG
Specificity:	Acetyl-ATF-5 (K29) Polyclonal Antibody detects endogenous levels of ATF-5 protein only when acetylated at K29.
Characteristics:	Rabbit Polyclonal to Acetyl-ATF-5 (K29).
Purification:	The antibody was affinity-purified from rabbit antiserum by affinity-chromatography using epitope-specific immunogen.

Target Details

Target:	ATF5
---------	------

## Target Details

---

Alternative Name:	<a href="#">ATF-5 (ATF5 Products)</a>
Molecular Weight:	30 kDa
Gene ID:	22809
UniProt:	<a href="#">Q9Y2D1</a>
Pathways:	<a href="#">Myometrial Relaxation and Contraction</a>

## Application Details

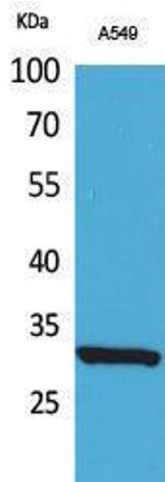
---

Application Notes:	WB 1:500-1:2000, ELISA 1:20000,
Restrictions:	For Research Use only

## Handling

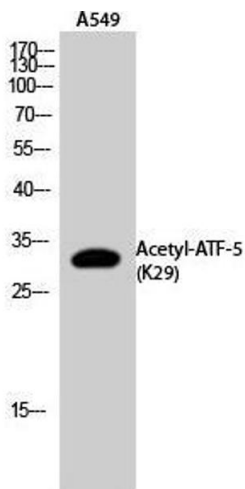
---

Format:	Liquid
Concentration:	1 mg/mL
Buffer:	Liquid in PBS containing 50 % glycerol, 0.5 % BSA and 0.02 % sodium azide.
Preservative:	Sodium azide
Precaution of Use:	This product contains Sodium azide: a POISONOUS AND HAZARDOUS SUBSTANCE which should be handled by trained staff only.
Handling Advice:	Avoid repeated freeze/thaw cycles.
Storage:	-20 °C
Storage Comment:	Store at -20°C.



### Western Blotting

Image 1.



### Western Blotting

Image 2. Western Blot (WB) analysis of A549 cells using Acetyl-ATF-5 (K29) Polyclonal Antibody.