

Datasheet for ABIN3181889  
**anti-XRCC6 antibody (acLys539)**



[Go to Product page](#)

3 Images

## Overview

Quantity:	100 µL
Target:	XRCC6
Binding Specificity:	acLys539
Reactivity:	Human
Host:	Rabbit
Clonality:	Polyclonal
Conjugate:	This XRCC6 antibody is un-conjugated
Application:	Western Blotting (WB), ELISA, Immunohistochemistry (Paraffin-embedded Sections) (IHC (p))

## Product Details

Immunogen:	Synthesized peptide derived from the human Ku-70 around the acetylation site of K539.
Isotype:	IgG
Specificity:	Acetyl-Ku-70 (K539) Polyclonal Antibody detects endogenous levels of Ku-70 protein only when acetylated at K539.
Characteristics:	Rabbit Polyclonal to Acetyl-Ku-70 (K539).
Purification:	The antibody was affinity-purified from rabbit antiserum by affinity-chromatography using epitope-specific immunogen.

## Target Details

Target:	XRCC6
---------	-------

### Target Details

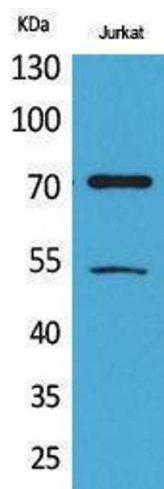
Alternative Name:	Ku-70 ( <a href="#">XRCC6 Products</a> )
Molecular Weight:	70 kDa
Gene ID:	2547
UniProt:	<a href="#">P12956</a>
Pathways:	<a href="#">DNA Damage Repair</a>

### Application Details

Application Notes:	WB 1:500-1:2000, IHC-P 1:100-300, ELISA 1:20000,
Restrictions:	For Research Use only

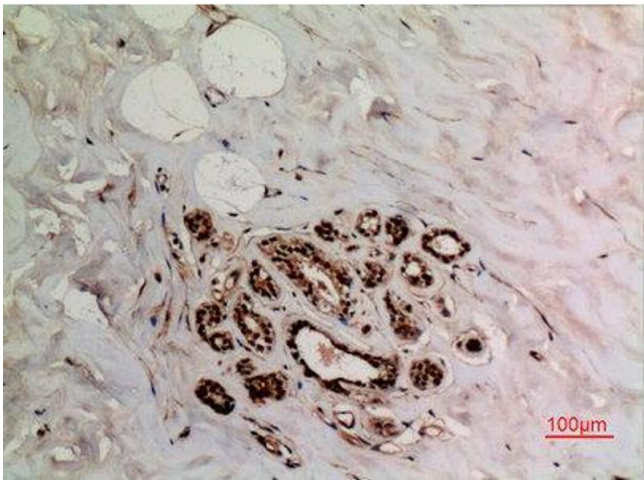
### Handling

Format:	Liquid
Concentration:	1 mg/mL
Buffer:	Liquid in PBS containing 50 % glycerol, 0.5 % BSA and 0.02 % sodium azide.
Preservative:	Sodium azide
Precaution of Use:	This product contains Sodium azide: a POISONOUS AND HAZARDOUS SUBSTANCE which should be handled by trained staff only.
Handling Advice:	Avoid repeated freeze/thaw cycles.
Storage:	-20 °C
Storage Comment:	Store at -20°C.



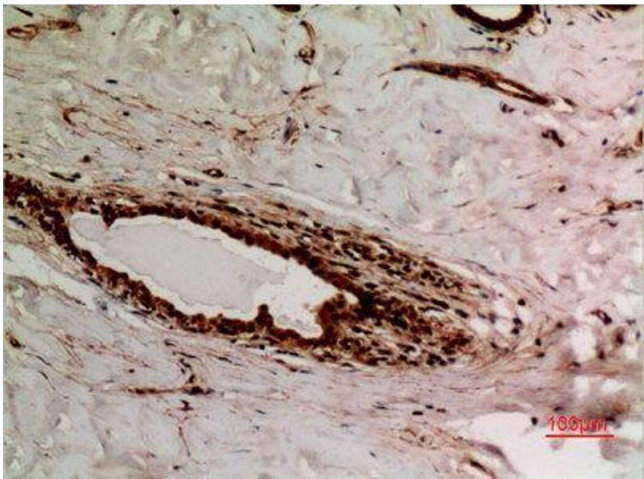
Western Blotting

Image 1.



Immunohistochemistry

Image 2. Immunohistochemistry (IHC) analysis of paraffin-embedded Human Breast, antibody was diluted at 1:100.



Immunohistochemistry

Image 3. Immunohistochemistry (IHC) analysis of paraffin-embedded Human Breast, antibody was diluted at 1:100.