

Datasheet for ABIN3181939
anti-CEBPB antibody (pThr235)



[Go to Product page](#)

1 Image

Overview

Quantity:	100 µL
Target:	CEBPB
Binding Specificity:	pThr235
Reactivity:	Human, Mouse, Rat
Host:	Rabbit
Clonality:	Polyclonal
Conjugate:	This CEBPB antibody is un-conjugated
Application:	Western Blotting (WB), ELISA, Immunohistochemistry (IHC), Immunofluorescence (IF)

Product Details

Immunogen:	Synthesized peptide derived from human C/EBP beta around the phosphorylation site of T235.
Isotype:	IgG
Specificity:	Phospho-C/EBP β (T235) Polyclonal Antibody detects endogenous levels of C/EBP β protein only when phosphorylated at T235.
Characteristics:	Rabbit Polyclonal to Phospho-C/EBP β (T235).
Purification:	The antibody was affinity-purified from rabbit antiserum by affinity-chromatography using epitope-specific immunogen.

Target Details

Target:	CEBPB
---------	-------

Target Details

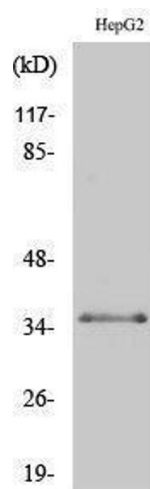
Alternative Name:	C/EBP beta (CEBPB Products)
Molecular Weight:	36 kDa
Gene ID:	1051
UniProt:	P17676
Pathways:	Interferon-gamma Pathway , Autophagy , Brown Fat Cell Differentiation

Application Details

Application Notes:	WB 1:500-1:2000, IHC 1:100-1:300, IF 1:200-1:1000, ELISA 1:10000,
Restrictions:	For Research Use only

Handling

Format:	Liquid
Concentration:	1 mg/mL
Buffer:	Liquid in PBS containing 50 % glycerol, 0.5 % BSA and 0.02 % sodium azide.
Preservative:	Sodium azide
Precaution of Use:	This product contains Sodium azide: a POISONOUS AND HAZARDOUS SUBSTANCE which should be handled by trained staff only.
Handling Advice:	Avoid repeated freeze/thaw cycles.
Storage:	-20 °C
Storage Comment:	Store at -20°C.



Western Blotting

Image 1.