



[Go to Product page](#)

Datasheet for ABIN3181941

## anti-CaMKIIalpha/delta antibody (pThr286)

### 1 Image

#### Overview

Quantity:	100 µL
Target:	CaMKIIalpha/delta
Binding Specificity:	pThr286
Reactivity:	Human, Mouse, Rat
Host:	Rabbit
Clonality:	Polyclonal
Conjugate:	This CaMKIIalpha/delta antibody is un-conjugated
Application:	Immunofluorescence (IF), Western Blotting (WB), Immunohistochemistry (IHC), ELISA

#### Product Details

Immunogen:	Synthesized peptide derived from human CaMKIIalpha/delta around the phosphorylation site of T286.
Isotype:	IgG
Specificity:	Phospho-CaMKIIα/δ (T286) Polyclonal Antibody detects endogenous levels of CaMKIIα/δ protein only when phosphorylated at T286.
Characteristics:	Rabbit Polyclonal to Phospho-CaMKIIα/δ (T286).
Purification:	The antibody was affinity-purified from rabbit antiserum by affinity-chromatography using epitope-specific immunogen.

#### Target Details

Target:	CaMKIIalpha/delta
---------	-------------------

## Target Details

Abstract: [CaMKIIalpha/delta Products](#)

Molecular Weight: 54 kDa

Gene ID: 815, 817

UniProt: [Q9UQM7, Q13557](#)

## Application Details

Application Notes: WB 1:500-1:2000, IHC 1:100-1:300, IF 1:200-1:1000, ELISA 1:10000,

Restrictions: For Research Use only

## Handling

Format: Liquid

Concentration: 1 mg/mL

Buffer: Liquid in PBS containing 50 % glycerol, 0.5 % BSA and 0.02 % sodium azide.

Preservative: Sodium azide

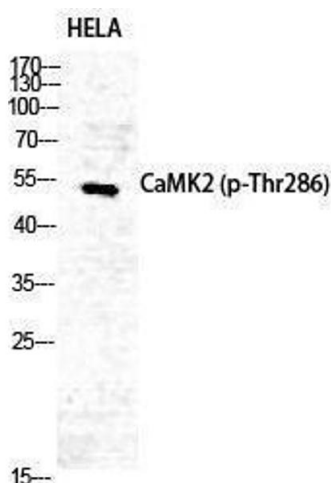
Precaution of Use: This product contains Sodium azide: a POISONOUS AND HAZARDOUS SUBSTANCE which should be handled by trained staff only.

Handling Advice: Avoid repeated freeze/thaw cycles.

Storage: -20 °C

Storage Comment: Store at -20°C.

## Images



### Western Blotting

Image 1.