

Datasheet for ABIN3181947
anti-beta Catenin antibody (pSer45, pThr41)



[Go to Product page](#)

2 Images

Overview

Quantity:	100 µL
Target:	beta Catenin (CATNB)
Binding Specificity:	pSer45, pThr41
Reactivity:	Human, Mouse, Rat
Host:	Rabbit
Clonality:	Polyclonal
Conjugate:	This beta Catenin antibody is un-conjugated
Application:	Western Blotting (WB), ELISA

Product Details

Immunogen:	Synthesized peptide derived from human Catenin-beta around the phosphorylation site of T41/S45.
Isotype:	IgG
Specificity:	Phospho-Catenin-β (T41/S45) Polyclonal Antibody detects endogenous levels of Catenin-β protein only when phosphorylated at T41/S45.
Characteristics:	Rabbit Polyclonal to Phospho-Catenin-β (T41/S45).
Purification:	The antibody was affinity-purified from rabbit antiserum by affinity-chromatography using epitope-specific immunogen.

Target Details

Target:	beta Catenin (CATNB)
---------	----------------------

Target Details

Alternative Name: Catenin-beta ([CATNB Products](#))

Molecular Weight: 85 kDa

Gene ID: 1499

UniProt: [P35222](#)

Pathways: [Peptide Hormone Metabolism](#)

Application Details

Application Notes: WB 1:500-1:2000, ELISA 1:20000,

Restrictions: For Research Use only

Handling

Format: Liquid

Concentration: 1 mg/mL

Buffer: Liquid in PBS containing 50 % glycerol, 0.5 % BSA and 0.02 % sodium azide.

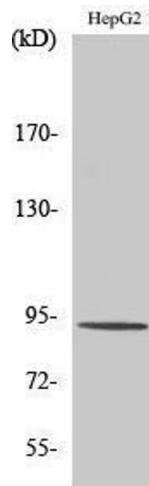
Preservative: Sodium azide

Precaution of Use: This product contains Sodium azide: a POISONOUS AND HAZARDOUS SUBSTANCE which should be handled by trained staff only.

Handling Advice: Avoid repeated freeze/thaw cycles.

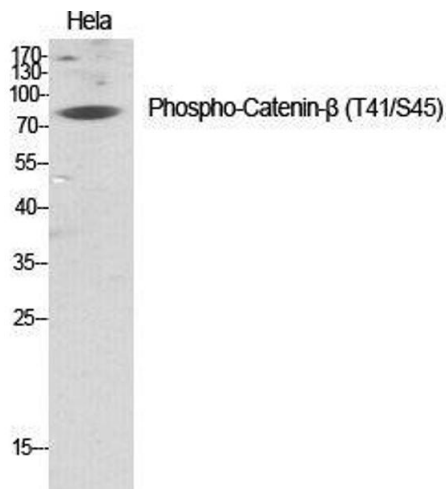
Storage: -20 °C

Storage Comment: Store at -20°C.



Western Blotting

Image 1.



Western Blotting

Image 2. Western Blot (WB) analysis of specific cells using Phospho-Catenin-beta (T41/S45) Polyclonal Antibody.