

Datasheet for ABIN3181949
anti-Caveolin-1 antibody (pTyr14)



[Go to Product page](#)

2 Images

Overview

| | |
|----------------------|---|
| Quantity: | 100 µL |
| Target: | Caveolin-1 (CAV1) |
| Binding Specificity: | pTyr14 |
| Reactivity: | Human, Rat, Mouse |
| Host: | Rabbit |
| Clonality: | Polyclonal |
| Conjugate: | This Caveolin-1 antibody is un-conjugated |
| Application: | Western Blotting (WB), ELISA |

Product Details

| | |
|------------------|---|
| Immunogen: | Synthesized peptide derived from human Caveolin-1 around the phosphorylation site of Y14. |
| Isotype: | IgG |
| Specificity: | Phospho-Caveolin-1 (Y14) Polyclonal Antibody detects endogenous levels of Caveolin-1 protein only when phosphorylated at Y14. |
| Characteristics: | Rabbit Polyclonal to Phospho-Caveolin-1 (Y14). |
| Purification: | The antibody was affinity-purified from rabbit antiserum by affinity-chromatography using epitope-specific immunogen. |

Target Details

| | |
|---------|-------------------|
| Target: | Caveolin-1 (CAV1) |
|---------|-------------------|

Target Details

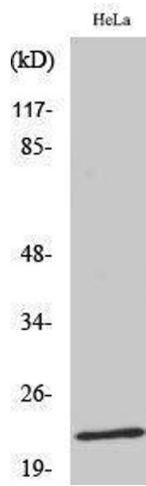
| | |
|-------------------|--|
| Alternative Name: | Caveolin-1 (CAV1 Products) |
| Molecular Weight: | 20 kDa |
| Gene ID: | 857 |
| UniProt: | Q03135 |
| Pathways: | Maintenance of Protein Location , Signaling Events mediated by VEGFR1 and VEGFR2 , Negative Regulation of Transporter Activity , VEGFR1 Specific Signals |

Application Details

| | |
|--------------------|---------------------------------|
| Application Notes: | WB 1:500-1:2000, ELISA 1:20000, |
| Restrictions: | For Research Use only |

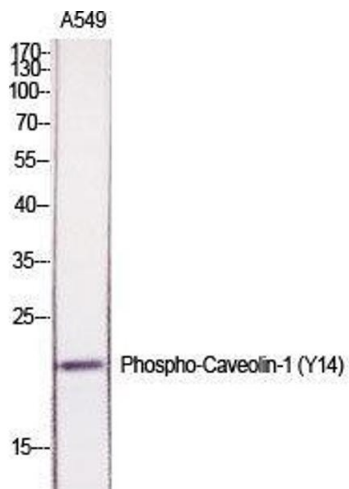
Handling

| | |
|--------------------|--|
| Format: | Liquid |
| Concentration: | 1 mg/mL |
| Buffer: | Liquid in PBS containing 50 % glycerol, 0.5 % BSA and 0.02 % sodium azide. |
| Preservative: | Sodium azide |
| Precaution of Use: | This product contains Sodium azide: a POISONOUS AND HAZARDOUS SUBSTANCE which should be handled by trained staff only. |
| Handling Advice: | Avoid repeated freeze/thaw cycles. |
| Storage: | -20 °C |
| Storage Comment: | Store at -20°C. |



Western Blotting

Image 1.



Western Blotting

Image 2. Western Blot (WB) analysis of specific cells using Phospho-Caveolin-1 (Y14) Polyclonal Antibody.