

Datasheet for ABIN3181970  
**anti-Connexin 43/GJA1 antibody (pSer368)**



[Go to Product page](#)

2 Images

## Overview

Quantity:	100 µL
Target:	Connexin 43/GJA1 (GJA1)
Binding Specificity:	pSer368
Reactivity:	Human, Rat, Mouse
Host:	Rabbit
Clonality:	Polyclonal
Conjugate:	This Connexin 43/GJA1 antibody is un-conjugated
Application:	Western Blotting (WB), Immunohistochemistry (IHC), ELISA

## Product Details

Immunogen:	Synthesized peptide derived from human Connexin 43 around the phosphorylation site of S368.
Isotype:	IgG
Specificity:	Phospho-Connexin 43 (S368) Polyclonal Antibody detects endogenous levels of Connexin 43 protein only when phosphorylated at S368.
Characteristics:	Rabbit Polyclonal to Phospho-Connexin 43 (S368).
Purification:	The antibody was affinity-purified from rabbit antiserum by affinity-chromatography using epitope-specific immunogen.

## Target Details

Target:	Connexin 43/GJA1 (GJA1)
---------	-------------------------

## Target Details

---

Alternative Name:	Connexin 43 ( <a href="#">GJA1 Products</a> )
Molecular Weight:	43 kDa
Gene ID:	2697
UniProt:	<a href="#">P17302</a>
Pathways:	<a href="#">MAPK Signaling</a> , <a href="#">Myometrial Relaxation and Contraction</a> , <a href="#">Cell-Cell Junction Organization</a>

## Application Details

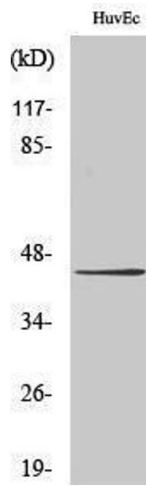
---

Application Notes:	WB 1:500-1:2000, IHC 1:100-1:300, ELISA 1:20000,
Restrictions:	For Research Use only

## Handling

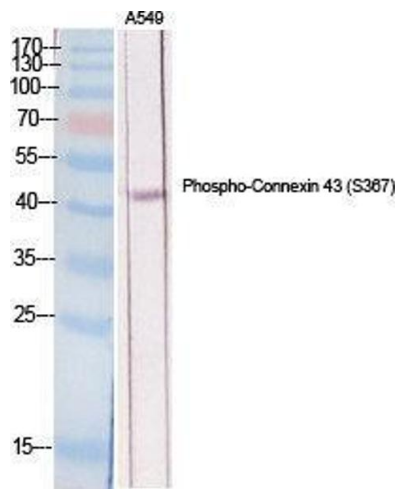
---

Format:	Liquid
Concentration:	1 mg/mL
Buffer:	Liquid in PBS containing 50 % glycerol, 0.5 % BSA and 0.02 % sodium azide.
Preservative:	Sodium azide
Precaution of Use:	This product contains Sodium azide: a POISONOUS AND HAZARDOUS SUBSTANCE which should be handled by trained staff only.
Handling Advice:	Avoid repeated freeze/thaw cycles.
Storage:	-20 °C
Storage Comment:	Store at -20°C.



### Western Blotting

Image 1.



### Western Blotting

Image 2. Western Blot (WB) analysis of specific cells using Phospho-Connexin 43 (S368) Polyclonal Antibody.