



[Go to Product page](#)

Datasheet for ABIN3181984
anti-DOK2 antibody (pTyr299)

1 Image

Overview

Quantity:	100 µL
Target:	DOK2
Binding Specificity:	pTyr299
Reactivity:	Human, Mouse, Monkey
Host:	Rabbit
Clonality:	Polyclonal
Conjugate:	This DOK2 antibody is un-conjugated
Application:	Western Blotting (WB), ELISA, Immunofluorescence (IF)

Product Details

Immunogen:	Synthesized peptide derived from human Dok-2 around the phosphorylation site of Y299.
Isotype:	IgG
Specificity:	Phospho-Dok-2 (Y299) Polyclonal Antibody detects endogenous levels of Dok-2 protein only when phosphorylated at Y299.
Characteristics:	Rabbit Polyclonal to Phospho-Dok-2 (Y299).
Purification:	The antibody was affinity-purified from rabbit antiserum by affinity-chromatography using epitope-specific immunogen.

Target Details

Target:	DOK2
---------	------

Target Details

Alternative Name: Dok-2 ([DOK2 Products](#))

Molecular Weight: 56/48 kDa

Gene ID: 9046

UniProt: [O60496](#)

Application Details

Application Notes: WB 1:500-1:2000, IF 1:200-1:1000, ELISA 1:20000,

Restrictions: For Research Use only

Handling

Format: Liquid

Concentration: 1 mg/mL

Buffer: Liquid in PBS containing 50 % glycerol, 0.5 % BSA and 0.02 % sodium azide.

Preservative: Sodium azide

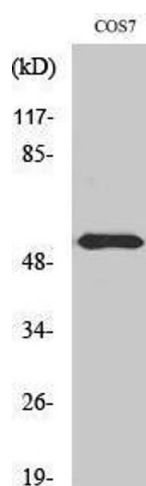
Precaution of Use: This product contains Sodium azide: a POISONOUS AND HAZARDOUS SUBSTANCE which should be handled by trained staff only.

Handling Advice: Avoid repeated freeze/thaw cycles.

Storage: -20 °C

Storage Comment: Store at -20°C.

Images



Western Blotting

Image 1.