



[Go to Product page](#)

Datasheet for ABIN3182031

anti-HRS (HRS) (pTyr216) antibody

1 Image

Overview

Quantity:	100 µL
Target:	HRS
Binding Specificity:	pTyr216
Reactivity:	Human, Mouse, Rat
Host:	Rabbit
Clonality:	Polyclonal
Conjugate:	Un-conjugated
Application:	ELISA, Western Blotting (WB)

Product Details

Immunogen:	Synthesized peptide derived from human Hrs around the phosphorylation site of Y216.
Isotype:	IgG
Specificity:	Phospho-Hrs (Y216) Polyclonal Antibody detects endogenous levels of Hrs protein only when phosphorylated at Y216.
Characteristics:	Rabbit Polyclonal to Phospho-Hrs (Y216).
Purification:	The antibody was affinity-purified from rabbit antiserum by affinity-chromatography using epitope-specific immunogen.

Target Details

Target:	HRS
---------	-----

Target Details

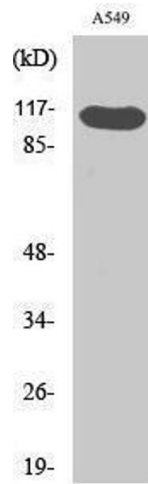
Alternative Name:	Hrs (HRS Products)
Molecular Weight:	115 kDa
Gene ID:	9146
UniProt:	O14964
Pathways:	CXCR4-mediated Signaling Events, EGFR Downregulation

Application Details

Application Notes:	WB 1:500-1:2000, ELISA 1:10000,
Restrictions:	For Research Use only

Handling

Format:	Liquid
Concentration:	1 mg/mL
Buffer:	Liquid in PBS containing 50 % glycerol, 0.5 % BSA and 0.02 % sodium azide.
Preservative:	Sodium azide
Precaution of Use:	This product contains Sodium azide: a POISONOUS AND HAZARDOUS SUBSTANCE which should be handled by trained staff only.
Handling Advice:	Avoid repeated freeze/thaw cycles.
Storage:	-20 °C
Storage Comment:	Store at -20°C.



Western Blotting

Image 1.