

Datasheet for ABIN3182049
anti-IRS1 antibody (pSer794)



[Go to Product page](#)

2 Images

Overview

Quantity:	100 µL
Target:	IRS1
Binding Specificity:	pSer794
Reactivity:	Human, Mouse, Rat
Host:	Rabbit
Clonality:	Polyclonal
Conjugate:	This IRS1 antibody is un-conjugated
Application:	Western Blotting (WB), Immunohistochemistry (IHC), ELISA, Immunofluorescence (IF)

Product Details

Immunogen:	Synthesized peptide derived from human IRS-1 around the phosphorylation site of S794.
Isotype:	IgG
Specificity:	Phospho-IRS-1 (S794) Polyclonal Antibody detects endogenous levels of IRS-1 protein only when phosphorylated at S794.
Characteristics:	Rabbit Polyclonal to Phospho-IRS-1 (S794).
Purification:	The antibody was affinity-purified from rabbit antiserum by affinity-chromatography using epitope-specific immunogen.

Target Details

Target:	IRS1
---------	------

Target Details

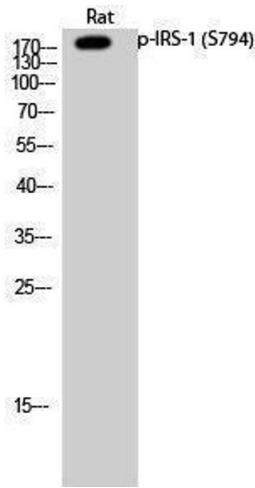
Alternative Name:	IRS-1 (IRS1 Products)
Molecular Weight:	180 kDa
Gene ID:	3667
UniProt:	P35568
Pathways:	Fc-epsilon Receptor Signaling Pathway , EGFR Signaling Pathway , Neurotrophin Signaling Pathway , Positive Regulation of Peptide Hormone Secretion , Hormone Transport , Negative Regulation of Hormone Secretion , Response to Growth Hormone Stimulus , Carbohydrate Homeostasis , Regulation of Carbohydrate Metabolic Process

Application Details

Application Notes:	WB 1:500-1:2000, IHC 1:100-1:300, IF 1:200-1:1000, ELISA 1:40000,
Restrictions:	For Research Use only

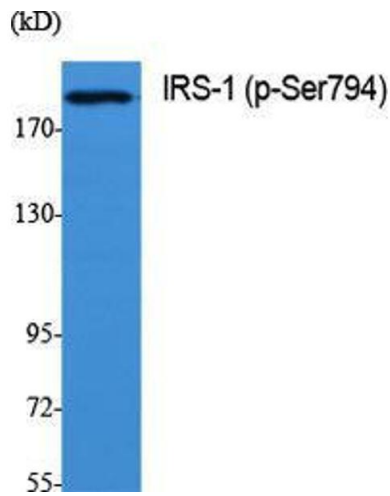
Handling

Format:	Liquid
Concentration:	1 mg/mL
Buffer:	Liquid in PBS containing 50 % glycerol, 0.5 % BSA and 0.02 % sodium azide.
Preservative:	Sodium azide
Precaution of Use:	This product contains Sodium azide: a POISONOUS AND HAZARDOUS SUBSTANCE which should be handled by trained staff only.
Handling Advice:	Avoid repeated freeze/thaw cycles.
Storage:	-20 °C
Storage Comment:	Store at -20°C.



Western Blotting

Image 1.



Western Blotting

Image 2. Western Blot (WB) analysis of specific cells using Phospho-IRS-1 (S794) Polyclonal Antibody.