



Datasheet for ABIN3182135 **anti-PRAGMIN antibody (pTyr413)**



[Go to Product page](#)

1 Image

Overview

Quantity:	100 µL
Target:	PRAGMIN (SGK223)
Binding Specificity:	pTyr413
Reactivity:	Mouse, Human, Rat
Host:	Rabbit
Clonality:	Polyclonal
Conjugate:	This PRAGMIN antibody is un-conjugated
Application:	Western Blotting (WB), ELISA, Immunohistochemistry (IHC)

Product Details

Immunogen:	Synthesized peptide derived from human Pragmin around the phosphorylation site of Y413.
Isotype:	IgG
Specificity:	Phospho-Pragmin (Y413) Polyclonal Antibody detects endogenous levels of Pragmin protein only when phosphorylated at Y413.
Characteristics:	Rabbit Polyclonal to Phospho-Pragmin (Y413).
Purification:	The antibody was affinity-purified from rabbit antiserum by affinity-chromatography using epitope-specific immunogen.

Target Details

Target:	PRAGMIN (SGK223)
---------	------------------

Target Details

Alternative Name: Pragmin ([SGK223 Products](#))

Molecular Weight: 175 kDa

Gene ID: 157285

UniProt: [Q86YV5](#)

Application Details

Application Notes: WB 1:500-1:2000, IHC 1:100-1:300, ELISA 1:10000,

Restrictions: For Research Use only

Handling

Format: Liquid

Concentration: 1 mg/mL

Buffer: Liquid in PBS containing 50 % glycerol, 0.5 % BSA and 0.02 % sodium azide.

Preservative: Sodium azide

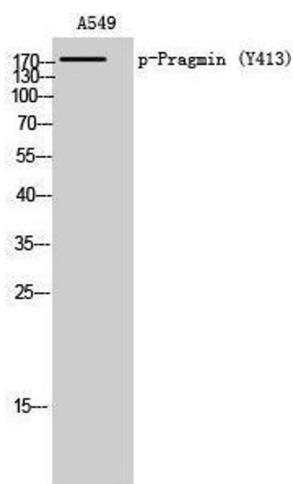
Precaution of Use: This product contains Sodium azide: a POISONOUS AND HAZARDOUS SUBSTANCE which should be handled by trained staff only.

Handling Advice: Avoid repeated freeze/thaw cycles.

Storage: -20 °C

Storage Comment: Store at -20°C.

Images



Western Blotting

Image 1.