

Datasheet for ABIN3182144
anti-SHB antibody (pTyr246)[Go to Product page](#)

1 Image

Overview

Quantity:	100 µL
Target:	SHB
Binding Specificity:	pTyr246
Reactivity:	Human, Mouse
Host:	Rabbit
Clonality:	Polyclonal
Conjugate:	This SHB antibody is un-conjugated
Application:	Western Blotting (WB), ELISA

Product Details

Immunogen:	Synthesized peptide derived from human Shb around the phosphorylation site of Y246.
Isotype:	IgG
Specificity:	Phospho-Shb (Y246) Polyclonal Antibody detects endogenous levels of Shb protein only when phosphorylated at Y246.
Characteristics:	Rabbit Polyclonal to Phospho-Shb (Y246).
Purification:	The antibody was affinity-purified from rabbit antiserum by affinity-chromatography using epitope-specific immunogen.

Target Details

Target:	SHB
---------	-----

Target Details

Alternative Name:	Shb (SHB Products)
Molecular Weight:	55 kDa
Gene ID:	6461
UniProt:	Q15464

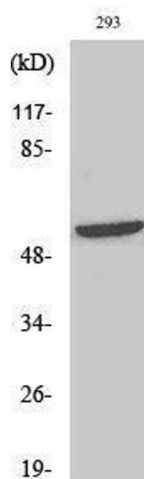
Application Details

Application Notes:	WB 1:500-1:2000, ELISA 1:10000,
Restrictions:	For Research Use only

Handling

Format:	Liquid
Concentration:	1 mg/mL
Buffer:	Liquid in PBS containing 50 % glycerol, 0.5 % BSA and 0.02 % sodium azide.
Preservative:	Sodium azide
Precaution of Use:	This product contains Sodium azide: a POISONOUS AND HAZARDOUS SUBSTANCE which should be handled by trained staff only.
Handling Advice:	Avoid repeated freeze/thaw cycles.
Storage:	-20 °C
Storage Comment:	Store at -20°C.

Images



Western Blotting

Image 1.