

Datasheet for ABIN3182156
anti-SYN1 antibody (pSer9)



[Go to Product page](#)

3 Images

Overview

Quantity:	100 µL
Target:	SYN1
Binding Specificity:	pSer9
Reactivity:	Human, Mouse, Rat
Host:	Rabbit
Clonality:	Polyclonal
Conjugate:	This SYN1 antibody is un-conjugated
Application:	Western Blotting (WB), ELISA, Immunohistochemistry (IHC), Immunofluorescence (IF)

Product Details

Immunogen:	Synthesized peptide derived from human Synapsin I around the phosphorylation site of S9.
Isotype:	IgG
Specificity:	Phospho-Synapsin I (S9) Polyclonal Antibody detects endogenous levels of Synapsin I protein only when phosphorylated at S9.
Purification:	The antibody was affinity-purified from rabbit antiserum by affinity-chromatography using epitope-specific immunogen.

Target Details

Target:	SYN1
Alternative Name:	Synapsin I (SYN1 Products)

Target Details

Molecular Weight: 74 kDa

Gene ID: 6853

UniProt: [P17600](#)

Application Details

Application Notes: WB 1:500 - 1:2000, IHC 1:100 - 1:300, IF 1:200 - 1:1000, ELISA 1:20000,

Restrictions: For Research Use only

Handling

Format: Liquid

Concentration: 1 mg/mL

Buffer: PBS containing 50 % glycerol, 0.5 % BSA and 0.02 % sodium azide.

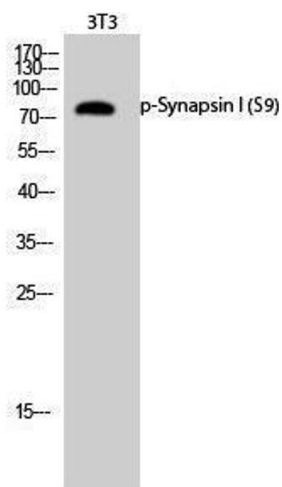
Preservative: Sodium azide

Precaution of Use: This product contains sodium azide: a POISONOUS AND HAZARDOUS SUBSTANCE which should be handled by trained staff only.

Handling Advice: Avoid repeated freeze/thaw cycles.

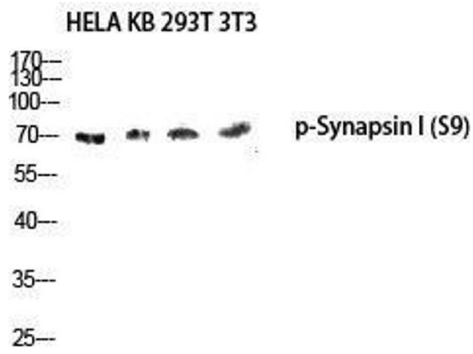
Storage: -20 °C

Images



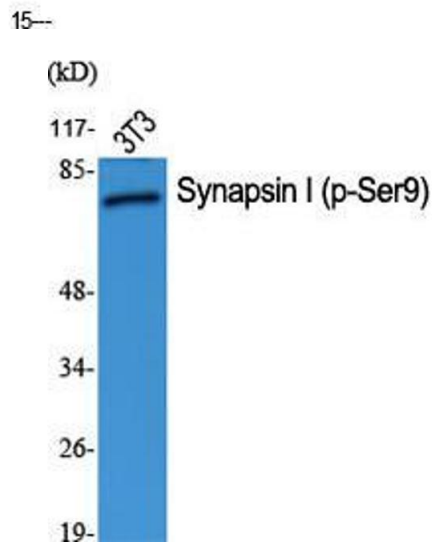
Western Blotting

Image 1.



Western Blotting

Image 2. Western Blot (WB) analysis of HeLa KB 293T 3T3 lysis using Phospho-Synapsin I (S9) antibody.



Western Blotting

Image 3. Western Blot (WB) analysis of specific cells using Phospho-Synapsin I (S9) Polyclonal Antibody.