

Datasheet for ABIN3182233  
**anti-ATRIP antibody (pSer68)**



[Go to Product page](#)

1 Image

## Overview

Quantity:	100 µL
Target:	ATRIP
Binding Specificity:	pSer68
Reactivity:	Human, Mouse, Rat
Host:	Rabbit
Clonality:	Polyclonal
Conjugate:	This ATRIP antibody is un-conjugated
Application:	Western Blotting (WB), ELISA

## Product Details

Immunogen:	Synthesized peptide derived from human ATRIP around the phosphorylation site of S68.
Isotype:	IgG
Specificity:	Phospho-ATRIP (S68) Polyclonal Antibody detects endogenous levels of ATRIP protein only when phosphorylated at S68.
Characteristics:	Rabbit Polyclonal to Phospho-ATRIP (S68).
Purification:	The antibody was affinity-purified from rabbit antiserum by affinity-chromatography using epitope-specific immunogen.

## Target Details

Target:	ATRIP
---------	-------

## Target Details

Alternative Name: ATRIP ([ATRIP Products](#))

Molecular Weight: 80 kDa

Gene ID: 84126

UniProt: [Q8WXE1](#)

## Application Details

Application Notes: WB 1:500-1:2000, ELISA 1:40000,

Restrictions: For Research Use only

## Handling

Format: Liquid

Concentration: 1 mg/mL

Buffer: Liquid in PBS containing 50 % glycerol, 0.5 % BSA and 0.02 % sodium azide.

Preservative: Sodium azide

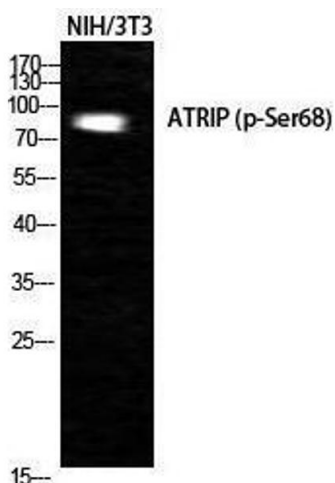
Precaution of Use: This product contains Sodium azide: a POISONOUS AND HAZARDOUS SUBSTANCE which should be handled by trained staff only.

Handling Advice: Avoid repeated freeze/thaw cycles.

Storage: -20 °C

Storage Comment: Store at -20°C.

## Images



### Western Blotting

Image 1.