

Datasheet for ABIN3182253
anti-Ephrin B1 antibody (pTyr317)[Go to Product page](#)

1 Image

Overview

Quantity:	100 µL
Target:	Ephrin B1 (EFNB1)
Binding Specificity:	pTyr317
Reactivity:	Human, Mouse, Rat
Host:	Rabbit
Clonality:	Polyclonal
Application:	Western Blotting (WB), ELISA

Product Details

Immunogen:	Synthesized peptide derived from human Ephrin-B1 around the phosphorylation site of Y317.
Isotype:	IgG
Specificity:	Phospho-Ephrin-B1 (Y317) Polyclonal Antibody detects endogenous levels of Ephrin-B1 protein only when phosphorylated at Y317.
Characteristics:	Rabbit Polyclonal to Phospho-Ephrin-B1 (Y317).
Purification:	The antibody was affinity-purified from rabbit antiserum by affinity-chromatography using epitope-specific immunogen.

Target Details

Target:	Ephrin B1 (EFNB1)
Alternative Name:	Ephrin-B1 (EFNB1 Products)

Target Details

Molecular Weight:	30 kDa
Gene ID:	1947
UniProt:	P98172
Pathways:	RTK Signaling

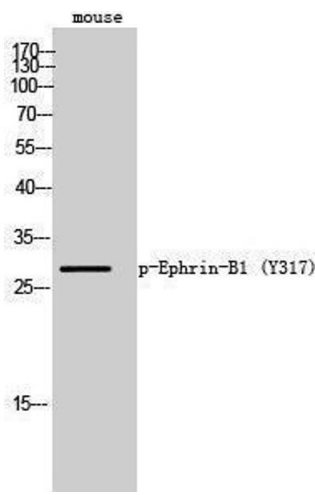
Application Details

Application Notes:	WB 1:500-1:2000, ELISA 1:20000,
Restrictions:	For Research Use only

Handling

Format:	Liquid
Concentration:	1 mg/mL
Buffer:	Liquid in PBS containing 50 % glycerol, 0.5 % BSA and 0.02 % sodium azide.
Preservative:	Sodium azide
Precaution of Use:	This product contains Sodium azide: a POISONOUS AND HAZARDOUS SUBSTANCE which should be handled by trained staff only.
Handling Advice:	Avoid repeated freeze/thaw cycles.
Storage:	-20 °C
Storage Comment:	Store at -20°C.

Images



Western Blotting

Image 1.