

Datasheet for ABIN3182262
anti-CDK9 antibody (pThr186)[Go to Product page](#)

1 Image

Overview

| | |
|----------------------|-------------------------------------|
| Quantity: | 100 µL |
| Target: | CDK9 |
| Binding Specificity: | pThr186 |
| Reactivity: | Human, Mouse, Rat |
| Host: | Rabbit |
| Clonality: | Polyclonal |
| Conjugate: | This CDK9 antibody is un-conjugated |
| Application: | Western Blotting (WB), ELISA |

Product Details

| | |
|------------------|---|
| Immunogen: | Synthesized peptide derived from human Cdk9 around the phosphorylation site of T186. |
| Isotype: | IgG |
| Specificity: | Phospho-Cdk9 (T186) Polyclonal Antibody detects endogenous levels of Cdk9 protein only when phosphorylated at T186. |
| Characteristics: | Rabbit Polyclonal to Phospho-Cdk9 (T186). |
| Purification: | The antibody was affinity-purified from rabbit antiserum by affinity-chromatography using epitope-specific immunogen. |

Target Details

| | |
|---------|------|
| Target: | CDK9 |
|---------|------|

Target Details

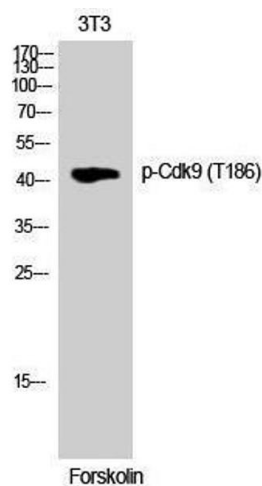
| | |
|-------------------|--|
| Alternative Name: | Cdk9 (CDK9 Products) |
| Molecular Weight: | 42 kDa |
| Gene ID: | 1025 |
| UniProt: | P50750 |
| Pathways: | Cell Division Cycle |

Application Details

| | |
|--------------------|--------------------------------|
| Application Notes: | WB 1:500-1:2000, ELISA 1:5000, |
| Restrictions: | For Research Use only |

Handling

| | |
|--------------------|--|
| Format: | Liquid |
| Concentration: | 1 mg/mL |
| Buffer: | Liquid in PBS containing 50 % glycerol, 0.5 % BSA and 0.02 % sodium azide. |
| Preservative: | Sodium azide |
| Precaution of Use: | This product contains Sodium azide: a POISONOUS AND HAZARDOUS SUBSTANCE which should be handled by trained staff only. |
| Handling Advice: | Avoid repeated freeze/thaw cycles. |
| Storage: | -20 °C |
| Storage Comment: | Store at -20°C. |



Western Blotting

Image 1.