



[Go to Product page](#)

Datasheet for ABIN3182270  
**anti-KIF20A antibody (pSer528)**

1 Image

Overview

Quantity:	100 µL
Target:	KIF20A
Binding Specificity:	pSer528
Reactivity:	Human
Host:	Rabbit
Clonality:	Polyclonal
Conjugate:	This KIF20A antibody is un-conjugated
Application:	Western Blotting (WB), ELISA, Immunohistochemistry (IHC)

Product Details

Immunogen:	Synthesized peptide derived from human KIF20A around the phosphorylation site of S528.
Isotype:	IgG
Specificity:	Phospho-KIF20A (S528) Polyclonal Antibody detects endogenous levels of KIF20A protein only when phosphorylated at S528.
Characteristics:	Rabbit Polyclonal to Phospho-KIF20A (S528).
Purification:	The antibody was affinity-purified from rabbit antiserum by affinity-chromatography using epitope-specific immunogen.

Target Details

Target:	KIF20A
---------	--------

## Target Details

Alternative Name: KIF20A ([KIF20A Products](#))

Molecular Weight: 100 kDa

Gene ID: 10112

UniProt: [O95235](#)

## Application Details

Application Notes: WB 1:500-1:2000, IHC 1:100-1:300, ELISA 1:5000,

Restrictions: For Research Use only

## Handling

Format: Liquid

Concentration: 1 mg/mL

Buffer: Liquid in PBS containing 50 % glycerol, 0.5 % BSA and 0.02 % sodium azide.

Preservative: Sodium azide

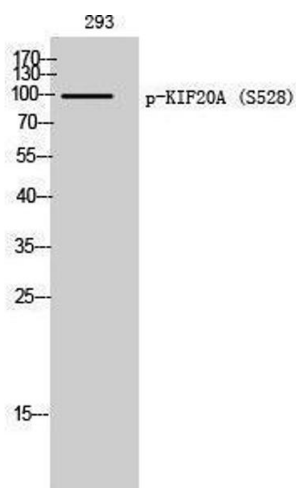
Precaution of Use: This product contains Sodium azide: a POISONOUS AND HAZARDOUS SUBSTANCE which should be handled by trained staff only.

Handling Advice: Avoid repeated freeze/thaw cycles.

Storage: -20 °C

Storage Comment: Store at -20°C.

## Images



### Western Blotting

Image 1.