



[Go to Product page](#)

Datasheet for ABIN3182287

## anti-CSNK2A1/CK II alpha antibody (pTyr255)

### 1 Image

#### Overview

Quantity:	100 µL
Target:	CSNK2A1/CK II alpha (CSNK2A1)
Binding Specificity:	pTyr255
Reactivity:	Human, Mouse, Rat
Host:	Rabbit
Clonality:	Polyclonal
Conjugate:	This CSNK2A1/CK II alpha antibody is un-conjugated
Application:	Western Blotting (WB), ELISA, Immunohistochemistry (IHC)

#### Product Details

Immunogen:	Synthesized peptide derived from human Casein Kinase IIalpha around the phosphorylation site of Y255.
Isotype:	IgG
Specificity:	Phospho-Casein Kinase IIα (Y255) Polyclonal Antibody detects endogenous levels of Casein Kinase IIα protein only when phosphorylated at Y255.
Characteristics:	Rabbit Polyclonal to Phospho-Casein Kinase IIα (Y255).
Purification:	The antibody was affinity-purified from rabbit antiserum by affinity-chromatography using epitope-specific immunogen.

#### Target Details

Target:	CSNK2A1/CK II alpha (CSNK2A1)
---------	-------------------------------

## Target Details

---

Alternative Name: Casein Kinase IIalpha ([CSNK2A1 Products](#))

Molecular Weight: 45 kDa

Gene ID: 1457

UniProt: [P68400](#)

Pathways: [SARS-CoV-2 Protein Interactome](#)

## Application Details

---

Application Notes: WB 1:500-1:2000, IHC 1:100-1:300, ELISA 1:10000,

Restrictions: For Research Use only

## Handling

---

Format: Liquid

Concentration: 1 mg/mL

Buffer: Liquid in PBS containing 50 % glycerol, 0.5 % BSA and 0.02 % sodium azide.

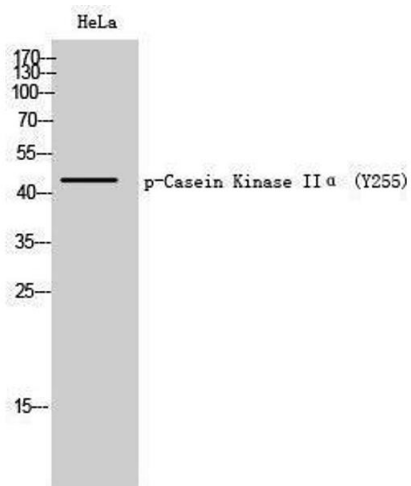
Preservative: Sodium azide

Precaution of Use: This product contains Sodium azide: a POISONOUS AND HAZARDOUS SUBSTANCE which should be handled by trained staff only.

Handling Advice: Avoid repeated freeze/thaw cycles.

Storage: -20 °C

Storage Comment: Store at -20°C.



### Western Blotting

Image 1.