



[Go to Product page](#)

Datasheet for ABIN3182308  
**anti-NEURL antibody (pTyr1112)**

1 Image

### Overview

Quantity:	100 µL
Target:	NEURL
Binding Specificity:	pTyr1112
Reactivity:	Human, Mouse, Rat
Host:	Rabbit
Clonality:	Polyclonal
Conjugate:	This NEURL antibody is un-conjugated
Application:	Western Blotting (WB), ELISA

### Product Details

Immunogen:	Synthesized peptide derived from human Neu around the phosphorylation site of Y1112.
Isotype:	IgG
Specificity:	Phospho-Neu (Y1112) Polyclonal Antibody detects endogenous levels of Neu protein only when phosphorylated at Y1112.
Characteristics:	Rabbit Polyclonal to Phospho-Neu (Y1112).
Purification:	The antibody was affinity-purified from rabbit antiserum by affinity-chromatography using epitope-specific immunogen.

### Target Details

Target:	NEURL
---------	-------

## Target Details

---

Alternative Name:	Neu ( <a href="#">NEURL Products</a> )
Molecular Weight:	150 kDa
Gene ID:	2064
UniProt:	<a href="#">P04626</a>
Pathways:	<a href="#">Notch Signaling</a> , <a href="#">EGFR Signaling Pathway</a>

## Application Details

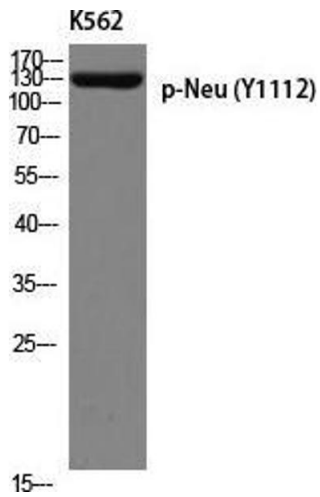
---

Application Notes:	WB 1:500-1:2000, ELISA 1:10000,
Restrictions:	For Research Use only

## Handling

---

Format:	Liquid
Concentration:	1 mg/mL
Buffer:	Liquid in PBS containing 50 % glycerol, 0.5 % BSA and 0.02 % sodium azide.
Preservative:	Sodium azide
Precaution of Use:	This product contains Sodium azide: a POISONOUS AND HAZARDOUS SUBSTANCE which should be handled by trained staff only.
Handling Advice:	Avoid repeated freeze/thaw cycles.
Storage:	-20 °C
Storage Comment:	Store at -20°C.



### Western Blotting

**Image 1.** Western Blot (WB) analysis of K562 using p-Neu (Y1112) antibody.