



[Go to Product page](#)

Datasheet for ABIN3182346

anti-FGFR1/FGFR2 antibody (pTyr463, pTyr466)

1 Image

Overview

Quantity:	100 µL
Target:	FGFR1/FGFR2
Binding Specificity:	pTyr463, pTyr466
Reactivity:	Human, Rat, Mouse
Host:	Rabbit
Clonality:	Polyclonal
Conjugate:	This FGFR1/FGFR2 antibody is un-conjugated
Application:	Western Blotting (WB), ELISA

Product Details

Immunogen:	Synthesized peptide derived from human Flg/Bek around the phosphorylation site of Y463/466.
Isotype:	IgG
Specificity:	Phospho-Flg/Bek (Y463/466) Polyclonal Antibody detects endogenous levels of Flg/Bek protein only when phosphorylated at Y463/466.
Characteristics:	Rabbit Polyclonal to Phospho-Flg/Bek (Y463/466).
Purification:	The antibody was affinity-purified from rabbit antiserum by affinity-chromatography using epitope-specific immunogen.

Target Details

Target:	FGFR1/FGFR2
---------	-------------

Target Details

Alternative Name:	Flg/Bek (FGFR1/FGFR2 Products)
Molecular Weight:	120 kDa
Gene ID:	2260, 2263
UniProt:	P11362 , P21802

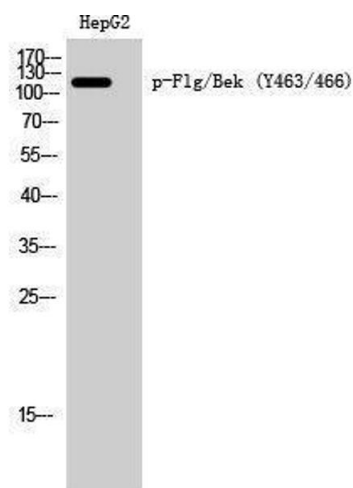
Application Details

Application Notes:	WB 1:500-1:2000, ELISA 1:10000,
Restrictions:	For Research Use only

Handling

Format:	Liquid
Concentration:	1 mg/mL
Buffer:	Liquid in PBS containing 50 % glycerol, 0.5 % BSA and 0.02 % sodium azide.
Preservative:	Sodium azide
Precaution of Use:	This product contains Sodium azide: a POISONOUS AND HAZARDOUS SUBSTANCE which should be handled by trained staff only.
Handling Advice:	Avoid repeated freeze/thaw cycles.
Storage:	-20 °C
Storage Comment:	Store at -20°C.

Images



Western Blotting

Image 1.