

Datasheet for ABIN3182386  
**anti-ERK1/2 antibody (pTyr205, pTyr222)**



[Go to Product page](#)

2 Images

## Overview

Quantity:	100 µL
Target:	ERK1/2 (MAPK1/3)
Binding Specificity:	pTyr205, pTyr222
Reactivity:	Human, Mouse, Rat
Host:	Rabbit
Clonality:	Polyclonal
Conjugate:	This ERK1/2 antibody is un-conjugated
Application:	Western Blotting (WB), ELISA

## Product Details

Immunogen:	Synthesized peptide derived from human ERK 1/2 around the phosphorylation site of Y222/205.
Isotype:	IgG
Specificity:	Phospho-ERK 1/2 (Y222/205) Polyclonal Antibody detects endogenous levels of ERK 1/2 protein only when phosphorylated at Y222/205.
Characteristics:	Rabbit Polyclonal to Phospho-ERK 1/2 (Y222/205).
Purification:	The antibody was affinity-purified from rabbit antiserum by affinity-chromatography using epitope-specific immunogen.

## Target Details

Target:	ERK1/2 (MAPK1/3)
---------	------------------

## Target Details

Alternative Name: ERK 1/2 ([MAPK1/3 Products](#))

Molecular Weight: 44/42 kDa

Gene ID: 5594, 5595

UniProt: [P28482](#), [P27361](#)

## Application Details

Application Notes: WB 1:500-1:2000, ELISA 1:10000,

Restrictions: For Research Use only

## Handling

Format: Liquid

Concentration: 1 mg/mL

Buffer: Liquid in PBS containing 50 % glycerol, 0.5 % BSA and 0.02 % sodium azide.

Preservative: Sodium azide

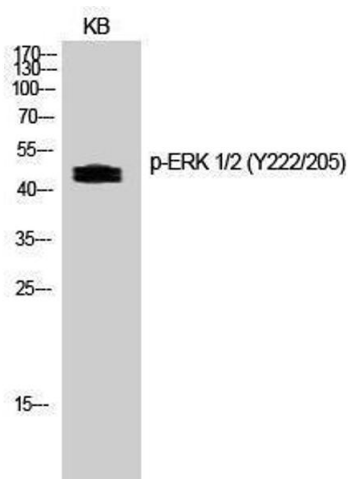
Precaution of Use: This product contains Sodium azide: a POISONOUS AND HAZARDOUS SUBSTANCE which should be handled by trained staff only.

Handling Advice: Avoid repeated freeze/thaw cycles.

Storage: -20 °C

Storage Comment: Store at -20°C.

## Images



### Western Blotting

Image 1.

### Western Blotting

**Image 2.** Western Blot (WB) analysis of specific cells using Phospho-ERK 1/2 (Y222/205) Polyclonal Antibody.

