



[Go to Product page](#)

Datasheet for ABIN3182437
anti-DAPP1 antibody (pTyr139)

1 Image

Overview

Quantity:	100 µL
Target:	DAPP1
Binding Specificity:	pTyr139
Reactivity:	Human, Mouse
Host:	Rabbit
Clonality:	Polyclonal
Conjugate:	This DAPP1 antibody is un-conjugated
Application:	Western Blotting (WB), ELISA, Immunohistochemistry (IHC), Immunofluorescence (IF)

Product Details

Immunogen:	Synthesized peptide derived from human BAM32 around the phosphorylation site of Y139.
Isotype:	IgG
Specificity:	Phospho-BAM32 (Y139) Polyclonal Antibody detects endogenous levels of BAM32 protein only when phosphorylated at Y139.
Characteristics:	Rabbit Polyclonal to Phospho-BAM32 (Y139).
Purification:	The antibody was affinity-purified from rabbit antiserum by affinity-chromatography using epitope-specific immunogen.

Target Details

Target:	DAPP1
---------	-------

Target Details

Alternative Name: BAM32 ([DAPP1 Products](#))

Molecular Weight: 32 kDa

Gene ID: 27071

UniProt: [Q9UN19](#)

Pathways: [BCR Signaling](#)

Application Details

Application Notes: WB 1:500-1:2000, IHC 1:100-1:300, IF 1:200-1:1000, ELISA 1:5000,

Restrictions: For Research Use only

Handling

Format: Liquid

Concentration: 1 mg/mL

Buffer: Liquid in PBS containing 50 % glycerol, 0.5 % BSA and 0.02 % sodium azide.

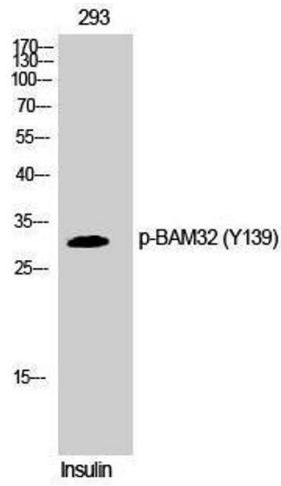
Preservative: Sodium azide

Precaution of Use: This product contains Sodium azide: a POISONOUS AND HAZARDOUS SUBSTANCE which should be handled by trained staff only.

Handling Advice: Avoid repeated freeze/thaw cycles.

Storage: -20 °C

Storage Comment: Store at -20°C.



Western Blotting

Image 1.