



[Go to Product page](#)

Datasheet for ABIN3182439

anti-EPHB1/2 antibody (pTyr594, pTyr604)

2 Images

Overview

Quantity:	100 µL
Target:	EPHB1/2
Binding Specificity:	pTyr594, pTyr604
Reactivity:	Human, Mouse, Rat
Host:	Rabbit
Clonality:	Polyclonal
Application:	Immunofluorescence (IF), Western Blotting (WB), ELISA

Product Details

Immunogen:	Synthesized peptide derived from human EphB1/2 around the phosphorylation site of Y594/604.
Isotype:	IgG
Specificity:	Phospho-EphB1/2 (Y594/604) Polyclonal Antibody detects endogenous levels of EphB1/2 protein only when phosphorylated at Y594/604.
Characteristics:	Rabbit Polyclonal to Phospho-EphB1/2 (Y594/604).
Purification:	The antibody was affinity-purified from rabbit antiserum by affinity-chromatography using epitope-specific immunogen.

Target Details

Target:	EPHB1/2
Alternative Name:	EphB1/2 (EPHB1/2 Products)

Target Details

Molecular Weight:	110 kDa
Gene ID:	2047, 1969
UniProt:	P54762 , P29323

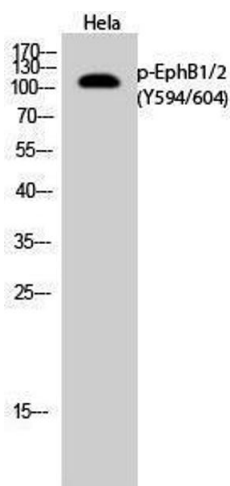
Application Details

Application Notes:	WB 1:500-1:2000, IF 1:200-1:1000, ELISA 1:5000,
Restrictions:	For Research Use only

Handling

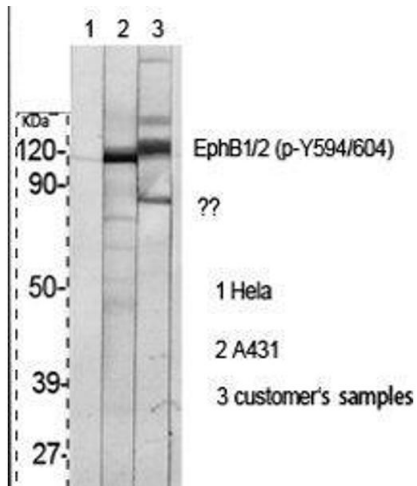
Format:	Liquid
Concentration:	1 mg/mL
Buffer:	Liquid in PBS containing 50 % glycerol, 0.5 % BSA and 0.02 % sodium azide.
Preservative:	Sodium azide
Precaution of Use:	This product contains Sodium azide: a POISONOUS AND HAZARDOUS SUBSTANCE which should be handled by trained staff only.
Handling Advice:	Avoid repeated freeze/thaw cycles.
Storage:	-20 °C
Storage Comment:	Store at -20°C.

Images



Western Blotting

Image 1.



Western Blotting

Image 2. Western Blot (WB) analysis of specific cells using Phospho-EphB1/2 (Y594/604) Polyclonal Antibody.