



[Go to Product page](#)

Datasheet for ABIN3182440
anti-EPOR antibody (pTyr368)

1 Image

Overview

Quantity:	100 µL
Target:	EPOR
Binding Specificity:	pTyr368
Reactivity:	Human, Mouse, Rat
Host:	Rabbit
Clonality:	Polyclonal
Conjugate:	This EPOR antibody is un-conjugated
Application:	Western Blotting (WB), ELISA, Immunofluorescence (IF)

Product Details

Immunogen:	Synthesized peptide derived from human EpoR around the phosphorylation site of Y368.
Isotype:	IgG
Specificity:	Phospho-EpoR (Y368) Polyclonal Antibody detects endogenous levels of EpoR protein only when phosphorylated at Y368.
Characteristics:	Rabbit Polyclonal to Phospho-EpoR (Y368).
Purification:	The antibody was affinity-purified from rabbit antiserum by affinity-chromatography using epitope-specific immunogen.

Target Details

Target:	EPOR
---------	------

Target Details

Alternative Name: [EpoR \(EPOR Products\)](#)

Molecular Weight: 55 kDa

Gene ID: 2057

UniProt: [P19235](#)

Pathways: [JAK-STAT Signaling](#)

Application Details

Application Notes: WB 1:500-1:2000, IF 1:200-1:1000, ELISA 1:10000,

Restrictions: For Research Use only

Handling

Format: Liquid

Concentration: 1 mg/mL

Buffer: Liquid in PBS containing 50 % glycerol, 0.5 % BSA and 0.02 % sodium azide.

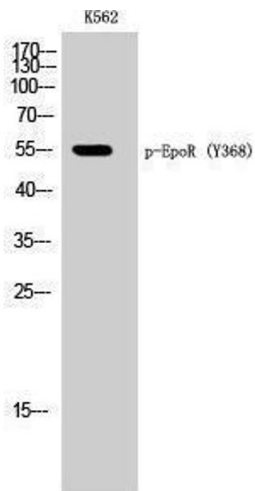
Preservative: Sodium azide

Precaution of Use: This product contains Sodium azide: a POISONOUS AND HAZARDOUS SUBSTANCE which should be handled by trained staff only.

Handling Advice: Avoid repeated freeze/thaw cycles.

Storage: -20 °C

Storage Comment: Store at -20°C.



Western Blotting

Image 1.