

Datasheet for ABIN3182459  
**anti-IRS1 antibody (pSer312)**



[Go to Product page](#)

2 Images

## Overview

Quantity:	100 µL
Target:	IRS1
Binding Specificity:	pSer312
Reactivity:	Human, Mouse, Rat
Host:	Rabbit
Clonality:	Polyclonal
Conjugate:	This IRS1 antibody is un-conjugated
Application:	Western Blotting (WB), ELISA, Immunofluorescence (IF)

## Product Details

Immunogen:	Synthesized peptide derived from human IRS-1 around the phosphorylation site of S312.
Isotype:	IgG
Specificity:	Phospho-IRS-1 (S312) Polyclonal Antibody detects endogenous levels of IRS-1 protein only when phosphorylated at S312.
Characteristics:	Rabbit Polyclonal to Phospho-IRS-1 (S312).
Purification:	The antibody was affinity-purified from rabbit antiserum by affinity-chromatography using epitope-specific immunogen.

## Target Details

Target:	IRS1
---------	------

## Target Details

---

Alternative Name:	<a href="#">IRS-1 (IRS1 Products)</a>
Molecular Weight:	170/132 kDa
Gene ID:	3667
UniProt:	<a href="#">P35568</a>
Pathways:	<a href="#">Fc-epsilon Receptor Signaling Pathway</a> , <a href="#">EGFR Signaling Pathway</a> , <a href="#">Neurotrophin Signaling Pathway</a> , <a href="#">Positive Regulation of Peptide Hormone Secretion</a> , <a href="#">Hormone Transport</a> , <a href="#">Negative Regulation of Hormone Secretion</a> , <a href="#">Response to Growth Hormone Stimulus</a> , <a href="#">Carbohydrate Homeostasis</a> , <a href="#">Regulation of Carbohydrate Metabolic Process</a>

## Application Details

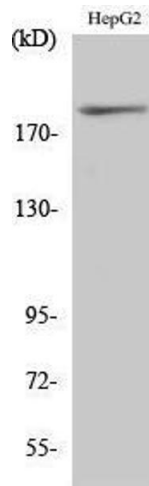
---

Application Notes:	WB 1:500-1:2000, IF 1:200-1:1000, ELISA 1:20000,
Restrictions:	For Research Use only

## Handling

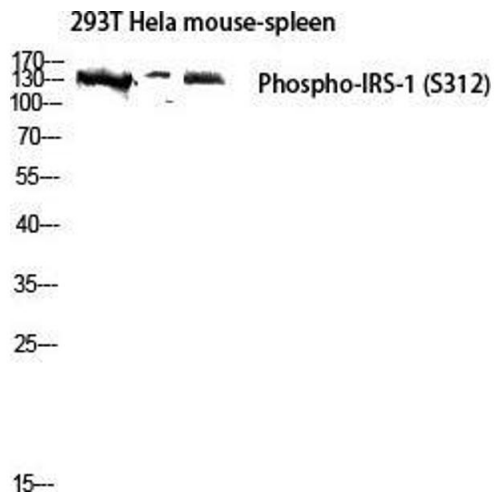
---

Format:	Liquid
Concentration:	1 mg/mL
Buffer:	Liquid in PBS containing 50 % glycerol, 0.5 % BSA and 0.02 % sodium azide.
Preservative:	Sodium azide
Precaution of Use:	This product contains Sodium azide: a POISONOUS AND HAZARDOUS SUBSTANCE which should be handled by trained staff only.
Handling Advice:	Avoid repeated freeze/thaw cycles.
Storage:	-20 °C
Storage Comment:	Store at -20°C.



**Western Blotting**

**Image 1.**



**Western Blotting**

**Image 2.** Western Blot (WB) analysis of 293T HeLa Mouse Spleen lysis using Phospho-IRS-1 (S312) antibody.