

Datasheet for ABIN3182467  
**anti-SHC1 antibody (pTyr427)**



[Go to Product page](#)

1 Image

## Overview

Quantity:	100 µL
Target:	SHC1
Binding Specificity:	pTyr427
Reactivity:	Human, Mouse, Rat
Host:	Rabbit
Clonality:	Polyclonal
Conjugate:	This SHC1 antibody is un-conjugated
Application:	Western Blotting (WB), Immunohistochemistry (IHC), ELISA

## Product Details

Immunogen:	Synthesized peptide derived from human Shc around the phosphorylation site of Y427.
Isotype:	IgG
Specificity:	Phospho-Shc (Y427) Polyclonal Antibody detects endogenous levels of Shc protein only when phosphorylated at Y427.
Characteristics:	Rabbit Polyclonal to Phospho-Shc (Y427).
Purification:	The antibody was affinity-purified from rabbit antiserum by affinity-chromatography using epitope-specific immunogen.

## Target Details

Target:	SHC1
---------	------

## Target Details

---

Alternative Name:	<a href="#">Shc (SHC1 Products)</a>
Molecular Weight:	70 kDa
Gene ID:	6464
UniProt:	<a href="#">P29353</a>
Pathways:	<a href="#">RTK Signaling</a> , <a href="#">TCR Signaling</a> , <a href="#">Fc-epsilon Receptor Signaling Pathway</a> , <a href="#">EGFR Signaling Pathway</a> , <a href="#">Neurotrophin Signaling Pathway</a> , <a href="#">ER-Nucleus Signaling</a> , <a href="#">Signaling Events mediated by VEGFR1 and VEGFR2</a>

## Application Details

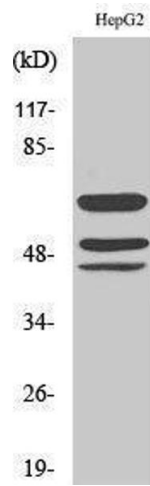
---

Application Notes:	WB 1:500-1:2000, IHC 1:100-1:300, ELISA 1:10000,
Restrictions:	For Research Use only

## Handling

---

Format:	Liquid
Concentration:	1 mg/mL
Buffer:	Liquid in PBS containing 50 % glycerol, 0.5 % BSA and 0.02 % sodium azide.
Preservative:	Sodium azide
Precaution of Use:	This product contains Sodium azide: a POISONOUS AND HAZARDOUS SUBSTANCE which should be handled by trained staff only.
Handling Advice:	Avoid repeated freeze/thaw cycles.
Storage:	-20 °C
Storage Comment:	Store at -20°C.



### Western Blotting

Image 1.