

Datasheet for ABIN3182494

**anti-Phospholipase C gamma 2 antibody (pTyr753)**[Go to Product page](#)**1** Image

## Overview

Quantity:	100 µL
Target:	Phospholipase C gamma 2 (PLCG2)
Binding Specificity:	pTyr753
Reactivity:	Human, Rat, Mouse
Host:	Rabbit
Clonality:	Polyclonal
Conjugate:	This Phospholipase C gamma 2 antibody is un-conjugated
Application:	Western Blotting (WB), Immunohistochemistry (IHC), ELISA

## Product Details

Immunogen:	Synthesized peptide derived from human PLC gamma2 around the phosphorylation site of Y753.
Isotype:	IgG
Specificity:	Phospho-PLC $\gamma$ 2 (Y753) Polyclonal Antibody detects endogenous levels of PLC $\gamma$ 2 protein only when phosphorylated at Y753.
Characteristics:	Rabbit Polyclonal to Phospho-PLC $\gamma$ 2 (Y753).
Purification:	The antibody was affinity-purified from rabbit antiserum by affinity-chromatography using epitope-specific immunogen.

## Target Details

Target:	Phospholipase C gamma 2 (PLCG2)
---------	---------------------------------

## Target Details

---

Alternative Name:	<a href="#">PLC Gamma2 (PLCG2 Products)</a>
Molecular Weight:	148 kDa
Gene ID:	5336
UniProt:	<a href="#">P16885</a>
Pathways:	<a href="#">RTK Signaling</a> , <a href="#">WNT Signaling</a> , <a href="#">Fc-epsilon Receptor Signaling Pathway</a> , <a href="#">Inositol Metabolic Process</a> , <a href="#">Myometrial Relaxation and Contraction</a> , <a href="#">Toll-Like Receptors Cascades</a> , <a href="#">VEGF Signaling</a> , <a href="#">BCR Signaling</a>

## Application Details

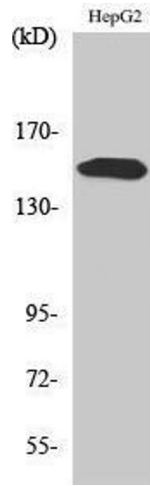
---

Application Notes:	WB 1:500-1:2000, IHC 1:100-1:300, ELISA 1:5000,
Restrictions:	For Research Use only

## Handling

---

Format:	Liquid
Concentration:	1 mg/mL
Buffer:	Liquid in PBS containing 50 % glycerol, 0.5 % BSA and 0.02 % sodium azide.
Preservative:	Sodium azide
Precaution of Use:	This product contains Sodium azide: a POISONOUS AND HAZARDOUS SUBSTANCE which should be handled by trained staff only.
Handling Advice:	Avoid repeated freeze/thaw cycles.
Storage:	-20 °C
Storage Comment:	Store at -20°C.



### Western Blotting

Image 1.