

Datasheet for ABIN3182548
anti-PPP1R12A antibody (pThr853)[Go to Product page](#)

2 Images

Overview

Quantity:	100 µL
Target:	PPP1R12A
Binding Specificity:	pThr853
Reactivity:	Human, Mouse, Rat
Host:	Rabbit
Clonality:	Polyclonal
Conjugate:	This PPP1R12A antibody is un-conjugated
Application:	Western Blotting (WB), Immunohistochemistry (IHC), ELISA

Product Details

Immunogen:	Synthesized peptide derived from human MYPT1 around the phosphorylation site of T853.
Isotype:	IgG
Specificity:	Phospho-MYPT1 (T853) Polyclonal Antibody detects endogenous levels of MYPT1 protein only when phosphorylated at T853.
Characteristics:	Rabbit Polyclonal to Phospho-MYPT1 (T853).
Purification:	The antibody was affinity-purified from rabbit antiserum by affinity-chromatography using epitope-specific immunogen.

Target Details

Target:	PPP1R12A
---------	----------

Target Details

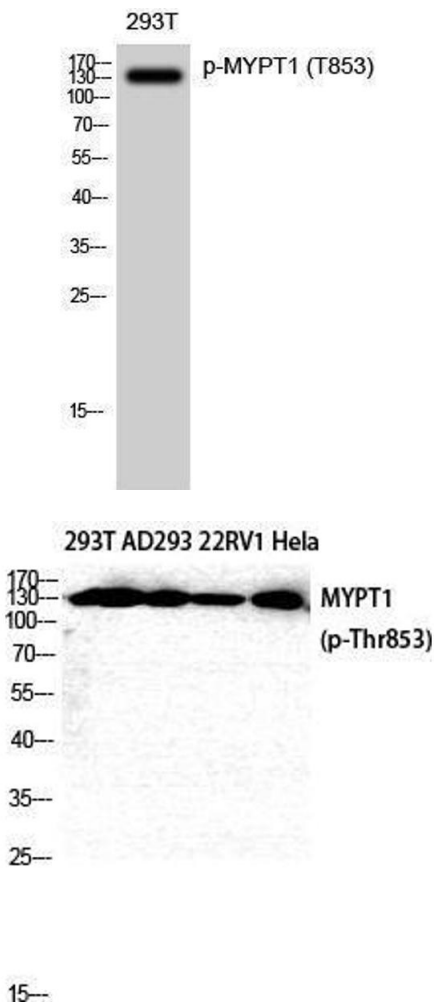
Alternative Name:	MYPT1 (PPP1R12A Products)
Molecular Weight:	130 kDa
Gene ID:	4659
UniProt:	O14974
Pathways:	M Phase

Application Details

Application Notes:	WB 1:500-1:2000, IHC 1:100-1:300, ELISA 1:5000,
Restrictions:	For Research Use only

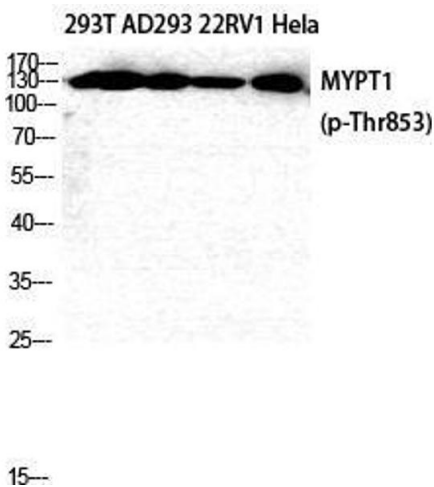
Handling

Format:	Liquid
Concentration:	1 mg/mL
Buffer:	Liquid in PBS containing 50 % glycerol, 0.5 % BSA and 0.02 % sodium azide.
Preservative:	Sodium azide
Precaution of Use:	This product contains Sodium azide: a POISONOUS AND HAZARDOUS SUBSTANCE which should be handled by trained staff only.
Handling Advice:	Avoid repeated freeze/thaw cycles.
Storage:	-20 °C
Storage Comment:	Store at -20°C.



Western Blotting

Image 1.



Western Blotting

Image 2. Western Blot (WB) analysis of 293T AD293 22RV1 HeLa cells using Phospho-MYPT1 (T853) Polyclonal Antibody.