

Datasheet for ABIN3182605  
**anti-PTPN1 antibody (pSer50)**



[Go to Product page](#)

1 Image

## Overview

Quantity:	100 µL
Target:	PTPN1
Binding Specificity:	pSer50
Reactivity:	Human, Mouse, Rat, Monkey
Host:	Rabbit
Clonality:	Polyclonal
Conjugate:	This PTPN1 antibody is un-conjugated
Application:	Western Blotting (WB), ELISA, Immunohistochemistry (IHC)

## Product Details

Immunogen:	Synthesized peptide derived from human PTP1B around the phosphorylation site of S50.
Isotype:	IgG
Specificity:	Phospho-PTP1B (S50) Polyclonal Antibody detects endogenous levels of PTP1B protein only when phosphorylated at S50.
Characteristics:	Rabbit Polyclonal to Phospho-PTP1B (S50).
Purification:	The antibody was affinity-purified from rabbit antiserum by affinity-chromatography using epitope-specific immunogen.

## Target Details

Target:	PTPN1
---------	-------

## Target Details

---

Alternative Name:	<a href="#">PTP1B (PTPN1 Products)</a>
Molecular Weight:	49 kDa
Gene ID:	5770
UniProt:	<a href="#">P18031</a>
Pathways:	<a href="#">TLR Signaling</a> , <a href="#">Response to Growth Hormone Stimulus</a> , <a href="#">ER-Nucleus Signaling</a> , <a href="#">Platelet-derived growth Factor Receptor Signaling</a>

## Application Details

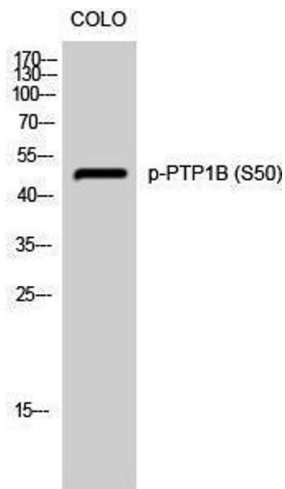
---

Application Notes:	WB 1:500-1:2000, IHC 1:100-1:300, ELISA 1:40000,
Restrictions:	For Research Use only

## Handling

---

Format:	Liquid
Concentration:	1 mg/mL
Buffer:	Liquid in PBS containing 50 % glycerol, 0.5 % BSA and 0.02 % sodium azide.
Preservative:	Sodium azide
Precaution of Use:	This product contains Sodium azide: a POISONOUS AND HAZARDOUS SUBSTANCE which should be handled by trained staff only.
Handling Advice:	Avoid repeated freeze/thaw cycles.
Storage:	-20 °C
Storage Comment:	Store at -20°C.



### Western Blotting

Image 1.