

Datasheet for ABIN3182653
anti-Merlin antibody (pSer10)



[Go to Product page](#)

1 Image

Overview

Quantity:	100 µL
Target:	Merlin (NF2)
Binding Specificity:	pSer10
Reactivity:	Human, Mouse, Rat
Host:	Rabbit
Clonality:	Polyclonal
Conjugate:	This Merlin antibody is un-conjugated
Application:	Western Blotting (WB), ELISA, Immunohistochemistry (IHC)

Product Details

Immunogen:	Synthesized peptide derived from human NF2 around the phosphorylation site of S10.
Isotype:	IgG
Specificity:	Phospho-NF2 (S10) Polyclonal Antibody detects endogenous levels of NF2 protein only when phosphorylated at S10.
Characteristics:	Rabbit Polyclonal to Phospho-NF2 (S10).
Purification:	The antibody was affinity-purified from rabbit antiserum by affinity-chromatography using epitope-specific immunogen.

Target Details

Target:	Merlin (NF2)
---------	--------------

Target Details

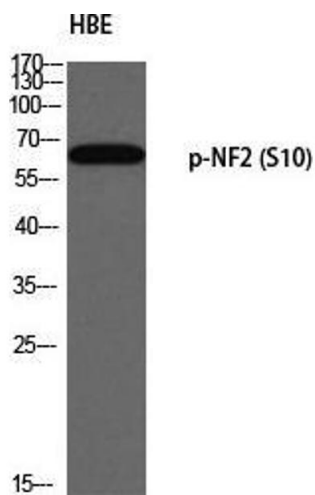
Alternative Name:	NF2 (NF2 Products)
Molecular Weight:	69 kDa
Gene ID:	4771
UniProt:	P35240
Pathways:	Cell-Cell Junction Organization

Application Details

Application Notes:	WB 1:500-1:2000, IHC 1:100-1:300, ELISA 1:5000,
Restrictions:	For Research Use only

Handling

Format:	Liquid
Concentration:	1 mg/mL
Buffer:	Liquid in PBS containing 50 % glycerol, 0.5 % BSA and 0.02 % sodium azide.
Preservative:	Sodium azide
Precaution of Use:	This product contains Sodium azide: a POISONOUS AND HAZARDOUS SUBSTANCE which should be handled by trained staff only.
Handling Advice:	Avoid repeated freeze/thaw cycles.
Storage:	-20 °C
Storage Comment:	Store at -20°C.



Western Blotting

Image 1. Western Blot (WB) analysis of HBE using p-NF2 (S10) antibody.