



[Go to Product page](#)

Datasheet for ABIN3182666  
**anti-MAP3K1 antibody (pThr1402)**

1 Image

Overview

Quantity:	100 µL
Target:	MAP3K1
Binding Specificity:	pThr1402
Reactivity:	Human, Mouse, Rat
Host:	Rabbit
Clonality:	Polyclonal
Conjugate:	This MAP3K1 antibody is un-conjugated
Application:	Western Blotting (WB), ELISA, Immunohistochemistry (IHC)

Product Details

Immunogen:	Synthesized peptide derived from human MEK Kinase-1 around the phosphorylation site of T1402.
Isotype:	IgG
Specificity:	Phospho-MEK Kinase-1 (T1402) Polyclonal Antibody detects endogenous levels of MEK Kinase-1 protein only when phosphorylated at T1402.
Characteristics:	Rabbit Polyclonal to Phospho-MEK Kinase-1 (T1402).
Purification:	The antibody was affinity-purified from rabbit antiserum by affinity-chromatography using epitope-specific immunogen.

Target Details

Target:	MAP3K1
---------	--------

## Target Details

---

Alternative Name:	MEK Kinase-1 ( <a href="#">MAP3K1 Products</a> )
Molecular Weight:	130 kDa
Gene ID:	4214
UniProt:	<a href="#">Q13233</a>
Pathways:	<a href="#">MAPK Signaling</a> , <a href="#">Interferon-gamma Pathway</a> , <a href="#">Caspase Cascade in Apoptosis</a> , <a href="#">TLR Signaling</a> , <a href="#">Fc-epsilon Receptor Signaling Pathway</a> , <a href="#">Activation of Innate immune Response</a> , <a href="#">Regulation of Actin Filament Polymerization</a> , <a href="#">Toll-Like Receptors Cascades</a>

## Application Details

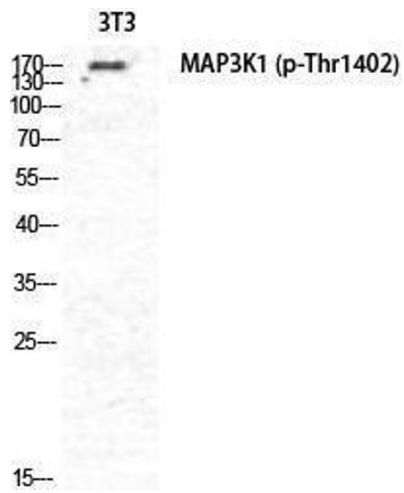
---

Application Notes:	WB 1:500-1:2000, IHC 1:100-1:300, ELISA 1:40000,
Restrictions:	For Research Use only

## Handling

---

Format:	Liquid
Concentration:	1 mg/mL
Buffer:	Liquid in PBS containing 50 % glycerol, 0.5 % BSA and 0.02 % sodium azide.
Preservative:	Sodium azide
Precaution of Use:	This product contains Sodium azide: a POISONOUS AND HAZARDOUS SUBSTANCE which should be handled by trained staff only.
Handling Advice:	Avoid repeated freeze/thaw cycles.
Storage:	-20 °C
Storage Comment:	Store at -20°C.



Western Blotting

Image 1.