



[Go to Product page](#)

Datasheet for ABIN3182676
anti-RIP2 antibody (pSer176)

1 Image

Overview

Quantity:	100 µL
Target:	RIP2
Binding Specificity:	pSer176
Reactivity:	Human, Mouse
Host:	Rabbit
Clonality:	Polyclonal
Conjugate:	This RIP2 antibody is un-conjugated
Application:	Western Blotting (WB), ELISA, Immunohistochemistry (IHC)

Product Details

Immunogen:	Synthesized peptide derived from human RIP2 around the phosphorylation site of S176.
Isotype:	IgG
Specificity:	Phospho-RIP2 (S176) Polyclonal Antibody detects endogenous levels of RIP2 protein only when phosphorylated at S176.
Characteristics:	Rabbit Polyclonal to Phospho-RIP2 (S176).
Purification:	The antibody was affinity-purified from rabbit antiserum by affinity-chromatography using epitope-specific immunogen.

Target Details

Target:	RIP2
---------	------

Target Details

Alternative Name:	RIP2 (RIP2 Products)
Molecular Weight:	70 kDa
Gene ID:	8767
UniProt:	O43353
Pathways:	TCR Signaling , Activation of Innate immune Response , Cellular Response to Molecule of Bacterial Origin , Positive Regulation of Immune Effector Process , Toll-Like Receptors Cascades

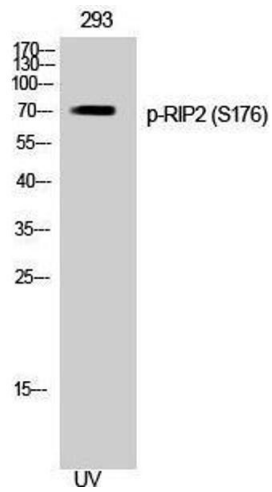
Application Details

Application Notes: WB 1:500-1:2000, IHC 1:100-1:300, ELISA 1:40000,

Restrictions: For Research Use only

Handling

Format:	Liquid
Concentration:	1 mg/mL
Buffer:	Liquid in PBS containing 50 % glycerol, 0.5 % BSA and 0.02 % sodium azide.
Preservative:	Sodium azide
Precaution of Use:	This product contains Sodium azide: a POISONOUS AND HAZARDOUS SUBSTANCE which should be handled by trained staff only.
Handling Advice:	Avoid repeated freeze/thaw cycles.
Storage:	-20 °C
Storage Comment:	Store at -20°C.



Western Blotting

Image 1.