



Datasheet for ABIN3182680
anti-LCP2 antibody (pTyr128)



[Go to Product page](#)

1 Image

Overview

Quantity:	100 µL
Target:	LCP2
Binding Specificity:	pTyr128
Reactivity:	Human, Mouse, Rat
Host:	Rabbit
Clonality:	Polyclonal
Conjugate:	This LCP2 antibody is un-conjugated
Application:	Western Blotting (WB), ELISA, Immunohistochemistry (IHC)

Product Details

Immunogen:	Synthesized peptide derived from human SLP-76 around the phosphorylation site of Y128.
Isotype:	IgG
Specificity:	Phospho-SLP-76 (Y128) Polyclonal Antibody detects endogenous levels of SLP-76 protein only when phosphorylated at Y128.
Characteristics:	Rabbit Polyclonal to Phospho-SLP-76 (Y128).
Purification:	The antibody was affinity-purified from rabbit antiserum by affinity-chromatography using epitope-specific immunogen.

Target Details

Target:	LCP2
---------	------

Target Details

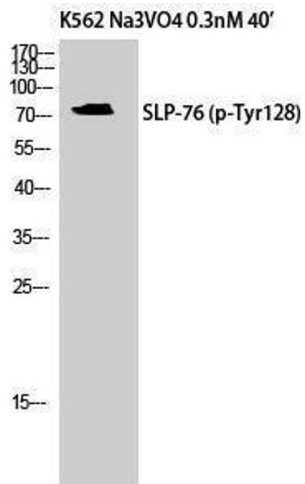
Alternative Name:	SLP-76 (LCP2 Products)
Molecular Weight:	75 kDa
Gene ID:	3937
UniProt:	Q13094
Pathways:	TCR Signaling, Fc-epsilon Receptor Signaling Pathway

Application Details

Application Notes:	WB 1:500-1:2000, IHC 1:100-1:300, ELISA 1:5000,
Restrictions:	For Research Use only

Handling

Format:	Liquid
Concentration:	1 mg/mL
Buffer:	Liquid in PBS containing 50 % glycerol, 0.5 % BSA and 0.02 % sodium azide.
Preservative:	Sodium azide
Precaution of Use:	This product contains Sodium azide: a POISONOUS AND HAZARDOUS SUBSTANCE which should be handled by trained staff only.
Handling Advice:	Avoid repeated freeze/thaw cycles.
Storage:	-20 °C
Storage Comment:	Store at -20°C.



Western Blotting

Image 1.