

Datasheet for ABIN3182693
anti-DPYSL2 antibody (pThr509)



[Go to Product page](#)

1 Image

Overview

Quantity:	100 µL
Target:	DPYSL2
Binding Specificity:	pThr509
Reactivity:	Human, Mouse, Rat
Host:	Rabbit
Clonality:	Polyclonal
Conjugate:	This DPYSL2 antibody is un-conjugated
Application:	Western Blotting (WB), ELISA, Immunohistochemistry (IHC)

Product Details

Immunogen:	Synthesized peptide derived from human CRMP-2 around the phosphorylation site of T509.
Isotype:	IgG
Specificity:	Phospho-CRMP-2 (T509) Polyclonal Antibody detects endogenous levels of CRMP-2 protein only when phosphorylated at T509.
Characteristics:	Rabbit Polyclonal to Phospho-CRMP-2 (T509).
Purification:	The antibody was affinity-purified from rabbit antiserum by affinity-chromatography using epitope-specific immunogen.

Target Details

Target:	DPYSL2
---------	--------

Target Details

Alternative Name: [CRMP-2 \(DPYSL2 Products\)](#)

Molecular Weight: 50 kDa

Gene ID: 1808

UniProt: [Q16555](#)

Pathways: [Regulation of Cell Size](#)

Application Details

Application Notes: WB 1:500-1:2000, IHC 1:100-1:300, ELISA 1:5000,

Restrictions: For Research Use only

Handling

Format: Liquid

Concentration: 1 mg/mL

Buffer: Liquid in PBS containing 50 % glycerol, 0.5 % BSA and 0.02 % sodium azide.

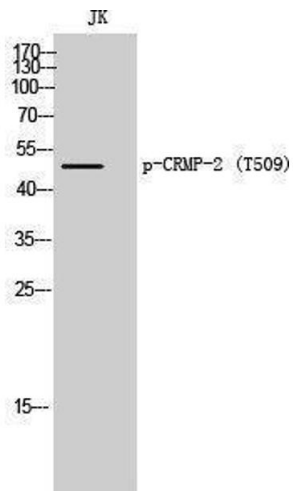
Preservative: Sodium azide

Precaution of Use: This product contains Sodium azide: a POISONOUS AND HAZARDOUS SUBSTANCE which should be handled by trained staff only.

Handling Advice: Avoid repeated freeze/thaw cycles.

Storage: -20 °C

Storage Comment: Store at -20°C.



Western Blotting

Image 1.